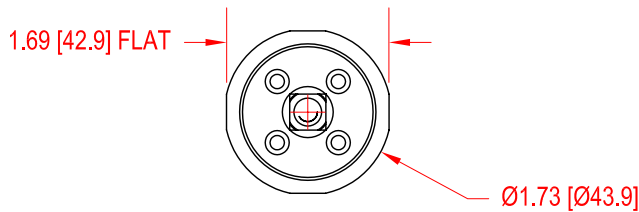
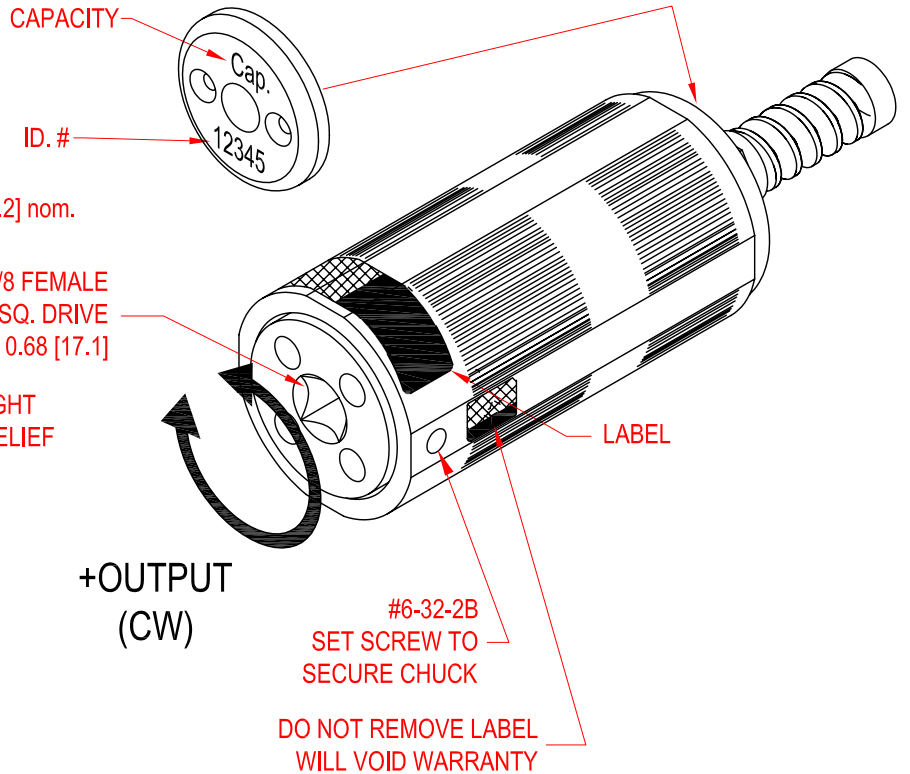
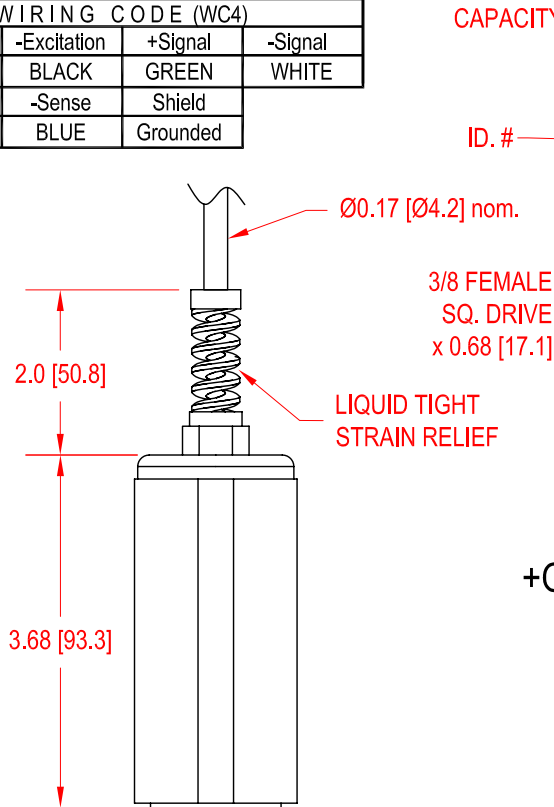


MODEL TAT300

Reaction Torque Sensor – Screw Driver

(Previously T5165) w/ 1/16-3/8 DIA. CHUCK

Drawing Number: F1140-A			
INCH [mm]		R.O.= Rated Output	
WIRING CODE (WC4)			
+Excitation	-Excitation	+Signal	-Signal
RED	BLACK	GREEN	WHITE
+Sense	-Sense	Shield	
ORANGE	BLUE	Grounded	



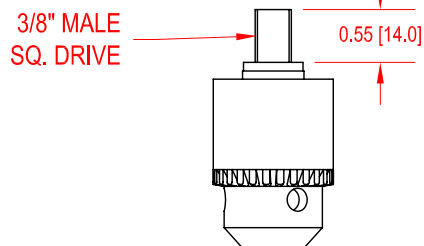
STK#	CAPACITY		TORSIONAL STIFFNESS
FSH00622	50 in-oz*	300 mNm	3300 in-oz/rad
FSH00623	12 in-lb*	1.5 Nm	1000 in-lb/rad
FSH00624	50 in-lb	6 Nm	9400 in-lb/rad
FSH00625	100 in-lb	12 Nm	13200 in-lb/rad

*with Overload Protection

REMOVABLE CHUCK ASSEMBLY

STOCK# FSH00619 - 1/16-3/8 DIA. CHUCK
6.3 oz [179 g] (NOT INCLUDED)

STOCK# FSH00618 - 5/64 -1/2 DIA. CHUCK
12.1 oz [343 g] (NOT INCLUDED)



SPECIFICATIONS:

RATED OUTPUT	2 mV/V nom.
SAFE OVERLOAD	150% of R.O.
ZERO BALANCE	±2% of R.O.
EXCITATION (VDC OR VAC)	18 MAX
BRIDGE RESISTANCE	1000 Ω nom.
NONLINEARITY	±0.2% of R.O.
HYSTERESIS	±0.2% of R.O.
NONREPEATABILITY	±0.05% of R.O.
TEMP. SHIFT ZERO	±0.002% of R.O./°F [0.0036% of R.O./°C]
TEMP. SHIFT SPAN	±0.002% of LOAD/°F [0.0036% of LOAD/°C]
COMPENSATED TEMP.	60 to 160 °F [15 to 72 °C]
OPERATING TEMP.	-40 to 180°F [-40 to 82°C]
WEIGHT	11 oz [312 g] WITHOUT CHUCK
MATERIAL	BLACK ANODIZED ALUMINUM
CABLE: #28 AWG, 6 Conductor, Retractable PVC Cable 10 ft [3 m] Long Extended	
ACCESSORIES AND RELATED INSTRUMENTS AVAILABLE	
CALIBRATION (STD)	5 pt. CW; 150K Ω SHUNT CAL VALUE
CALIBRATION (OPT)	5pt. CCW
CALIBRATION TEST EXCITATION	10 VDC