

Messen
Prüfen
Kontrollieren
Sortieren
Positionieren
Vollständigkeitskontrolle
Vorhandenseinskontrolle
Oberflächeninspektion
Teileprüfung
Werkzeugvoreinstellung
3D Sehen
3D Erkennung
Robot Vision
Markierungskontrolle
Koplanarität
BGA-Prüfung
Konturprüfung
Fehler- und Verschmutzungserkennung
OCR / OCV
Zeichenerkennung
Code Lesen
Faden- und Stoffprüfung
Papier- und Folienprüfung
Metallprüfung
Displayprüfung LCD, LED, OLED
Mustervergleich
Blasenkontrolle
Robotersteuerung
Bohrer Vermessung
Thermografie
Plastik-Inspektion
2D
und vieles mehr...

Product data:

EmSens ColorInspect

MACHINE VISION SYSTEM



Description:

EmSens ColorInspect can detect, filter and sort according to the color of the object.

There are many application possibilities e.g. sorting cables, cosmetics, food, electronic component parts, etc.

With only a few commands you can cover the whole color inspection range.

The EyeVision software also offers the drag-and-drop programming with the graphical user interface.

You can find more information on our website: www.evt-web.com.

Or contact us if you have any questions: **+49 (0) 721 668 004 23**

Camera Models Basler ace

Model	Resolution	Sensor	Frame Rate	Interface
Basler acA800-200gm	800 x 600	1/3.6" monochrome	240 fps	Gigabit Ethernet
Basler acA1440-73gm	1440 x 1080	1/2.9" monochrome	73 fps	Gigabit Ethernet
Basler acA1600-60gm	1600 x 1200	1/1.8" monochrome	60 fps	Gigabit Ethernet
Basler acA2440-20gm	2448 x 2048	2/3" monochrome	20 fps	Gigabit Ethernet
Basler acA800-510um	800 x 600	1/3.6" monochrome	511 fps	USB 3.0
Basler acA1440-220um	1440 x 1080	1/2.9" monochrome	220 fps	USB 3.0
Basler acA2440-35um	2448 x 2048	2/3" monochrome	35 fps	USB 3.0
Basler acA800-200gc	800 x 600	1/3.6" color	240 fps	Gigabit Ethernet
Basler acA1440-73gc	1440 x 1080	1/2.9" color	73 fps	Gigabit Ethernet
Basler acA800-510uc	800 x 600	1/3.6" color	511 fps	USB 3.0
Basler acA1440-220uc	1440 x 1080	1/2.9" color	220 fps	USB 3.0
Basler acA2440-35uc	2448 x 2048	2/3" color	35 fps	USB 3.0

Camera Models Basler dart

Model*	Resolution	Sensor	Frame Rate	Interface
Basler daA1280-54um	1280 x 960	1/3" monochrom	54 fps	USB 3.0
Basler daA1600-60um	1600 x 1200	1/1.8" monochrom	60 fps	USB 3.0
Basler daA1920-30um	1920 x 1080	1/3.7" monochrom	30 fps	USB 3.0
Basler daA2500-14um	2590 x 1942	1/2.5" monochrom	14 fps	USB 3.0

* all camera models are also available with color sensor



Computing Hardware

EmSys – Machine Vision Computer

Features

- Intel ATOM SoC E3845 Quad Core 1.91 GHz
- 4G-byte DRAM, 64G-byte storage for operating system
- 64-bit OS: Windows 10 IoT Enterprise, Windows 10 IoT Core, Ubuntu 16.04
- HDMI and VGA Display Ports
- 4 GigE camera ports with PoE+ support
- 4 independent constant current LED driver
- 8 digital Inputs and 8 digital Outputs
- DINrail mount, fanless



Raspberry Pi



Odroid



Command set

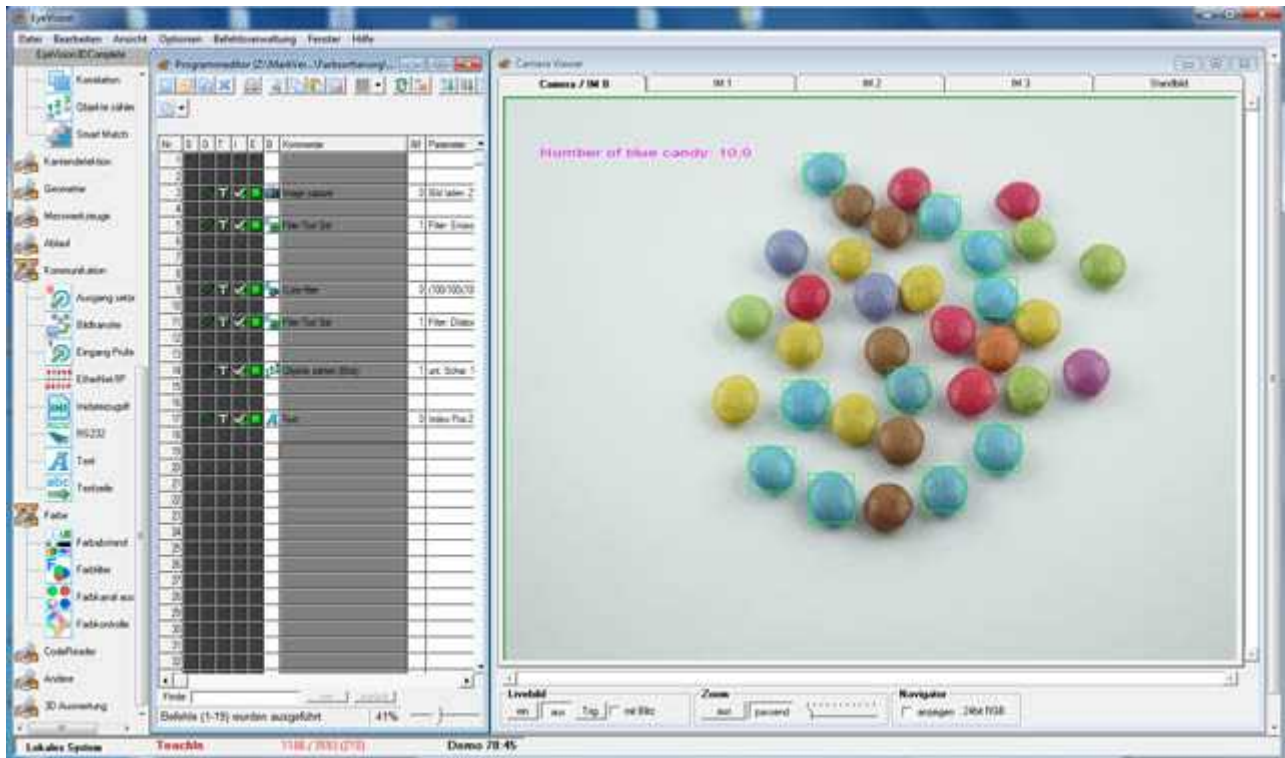
	Image Acquisition		Object count BLOB		Script Interpreter		Overlay Arrow
	Asynchronous Image Acquisition		Check Input		Window		Overlay Circle
	Camera Control		Set Output		Rectangular edge detection		Overlay Cross
	Calibration		Display Register Values		Select Color Channel		Overlay Line
	Stop watch		Global String		Color Control		Overlay Square
	Program Flow Control		Image Transfer		Color Filter		JSON / XML (Read)
	Subroutine call		Image Information		LED Color Inspection		JSON / XML (Write)
	Value evaluation		Point List		Point Operation Set	Filter: Gray to RGB RGB to Gray	

EyeVision Software

The drag-and-drop software with the graphical user interface.

Every EmSens vision sensor contains the EyeVision software with a specially activated command set (see list above). This command set can be extended with any command out of the EyeVision command range.

The screenshot displays the EyeVision software interface. On the left is the 'Command Set' panel with a tree view of various commands. In the center is the 'Program Editor' showing a script for 'Example Position Adjustment' with columns for 'E', 'G', 'T', 'I', 'R', 'B', 'Kommentar', 'IM', and 'Parameter'. On the right is a camera view showing two rings, one red and one blue, with a green circle overlaid on the blue ring. Arrows indicate the flow from the Command Set to the Program Editor and then to the camera view.



EyeVision Configuration Mode: detecting blue chocolate drops

Further *EmSens* Vision Sensors:

- EmSens BarCode Reader
- EmSens OCR Reader
- EmSens Measure
- EmSens DMC
- EmSens Match
- EmSens Object Count