

Extensive lineup adapted to a wide variety of applications

Instrument Product Line-up



Data Logger

Isolated input, multi-channel logger

midi LOGGER

GL840series



High withstand voltage model
GL840-WV

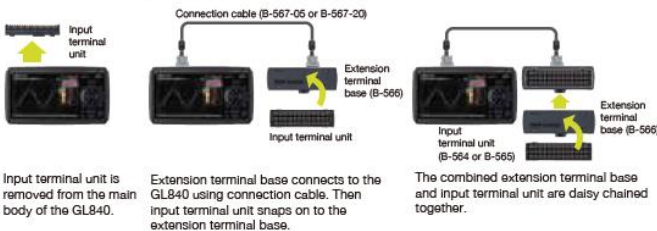
Multi-input model
GL840-M

| | | | | |
|------------------------------|-----------------------------------|--|------------------------------|-----------------------------|
| Max. 10ms sampling | Σ type A/D converter | Temp. Humidity, Voltage, Pulse/Logic | Up to 200 channels | LAN USB SDcard |
|------------------------------|-----------------------------------|--|------------------------------|-----------------------------|

- Multifunction analog inputs
 - Voltage** 20 mV to 100 V
 - Temp.** TC: R, S, B, K, E, T, J, N, W (WR5-26)
 - RTD:** Pt100, Pt1000 (IEC750), JPt100 (JIS)
 - Humidity** 0 to 100% (the B-530 option is required)
- Pulse/Logic inputs
 - Pulse** 4ch (Accumulating, Instant, or Rotation)*
 - Logic** 4ch*
- Flexible input system for wide array of applications
- WLAN (option) capable for remote monitoring
- Maximum sampling rate up to 10 ms⁻³
- Extended memory capacity using SD memory card
- Combining GL100 and GL840 by using WLAN

*1: WLAN is available in limited regions. *2: Select either Pulse or Logic input, and use the optional input/output cable (B-513). *3: Sampling rate is limited by the number of channels to be used.

■ Expandable up to 200 channels in GL840



- Support the GS sensors in GL840
Temperature, acceleration, and others are able to measure using the GL sensors.

10 channel handy type logger

midi LOGGER

GL240



| | | | | |
|------------------------------|-----------------------------------|--|-----------------------|----------------------|
| Max. 10ms sampling | Σ type A/D converter | Temp. Humidity, Voltage, Pulse/Logic | 10 channels | USB SDcard |
|------------------------------|-----------------------------------|--|-----------------------|----------------------|

- Multifunction analog inputs
 - Voltage** 20 mV to 100 V
 - Temp.** TC: R, S, B, K, E, T, J, N, W (WR5-26)
 - Humidity** 0 to 100% (the B-530 option is required)
- Pulse/Logic inputs
 - Pulse** 4ch (Accumulating, Instant, or Rotation)*
 - Logic** 4ch*
- Multifunction input in 10 isolated channels
- Maximum sampling rate up to 10 ms⁻³
- Extended memory capacity using SD memory card
- WLAN (option) capable for remote monitoring
- Combining GL100 and GL240 by using WLAN

■ Combining GL100-WL and GL240/GL840

GL100-WL can now be connected to the GL240 or GL840 as a remote sensor.



PetitLOGGER GL100 series

- Supports a wide array measurement by exchanging the sensor
- Connecting to the PC or smart device via a WLAN
- Driving by a battery or USB bus power



GL100-WL
(with wireless LAN)

GL100-N
(without wireless LAN)

| | | | | | |
|---------------------------------|-------------------------|-------------------------------|--|-----------|---------------------------------|
| Wireless LAN GL100-WL | USB Interface | microSD memory card | Sensor, input terminal, adapter 7types | PC | Smart device GL100-WL |
|---------------------------------|-------------------------|-------------------------------|--|-----------|---------------------------------|

*4: WLAN is available in limited regions.

GS sensors

The sensor is connected to the GS sensor port of the GL840 and GL100.

| Sensors | | | |
|--|---|---|---|
| Temp./Humidity GS-TH Temp.: -20 to 85°C Humidity: 0 to 100% RH Dew-point temp., Accumulated temp. | Acceleration/Temp. GS-3AT Try-axis: max. 10 G Temp.: -10 to 50°C | Carbon dioxide (CO₂) GS-CO2 CO ₂ concentration: 0 to 9999 ppm | Illuminance/UV GS-LXUV GS-CO2 Illuminance: 0 to 200 klx UV intensity: 0 to 30 mW/cm ² Accumulated illuminance and UV |
| Dual port adapter | | Input terminal / Adapter | |
| Dual port adapter GS-DPA Connects two sensors of GS-TH, GS-CO2, GS-LXUV. | Thermistor terminal GS-4TSR 4ch Temp.: -40 to 120°C* * It varies by the sensor. 4ch Logic or Pulse | Current sensor adapter GS-DPA-AC Max. 50, 100, 200 A 2ch Single-phase, 3ch Three-phase power system | Voltage/Temp. terminal GS-4VT 4ch Voltage: max. 50 V 4ch Temp.: TC or T 4ch Logic or Pulse |
| Extension cable | | Thermistor sensor | |
| Extension cable for input module GS-EXC Cable length: 1.5 m | Normal type GS-103AT-2P 4ch | AC current sensor 50 A, 100 A, 200 A | |
| | Ultrathin type GS-103JT-4P 4ch | | |

High-speed High-Voltage Isolated 4 channel Data Logger midi **LOGGER HV GL2000** **NEW**



- Simultaneous sampling Isolated
- CAT III
- Max. 1MS/s (1µs)
- Voltage Temp., Humidity, Pulse/Logic
- Built-in RAM 4MS/ch
- Built-in Flash memory 4GB
- USB
- SDcard

- Multifunction analog inputs
 - Voltage** 20 mV to 1000 V DC, 1-5 V DC, 10 mV to 1000 V rms
 - Temp.** TC: K, J, E, T, R, S, B, N, W (WR65-26)
 - Humidity** 0 to 100% (the B-530 option is required)
- Pulse/Logic inputs
 - Pulse** 4 channels (*5) Accumulating, Instant or RPM
 - Logic** 4 channels (*5)
- 4ch High Speed Simultaneous Sampling
- CAT III 600V Compatible
- Measure AC 600 V Measurement with True-rms
- Built-in High-capacity RAM (4 M sampling/ch) and Flash memory (4 GB)
- Large Easy-to-read 7-inch LCD

Isolated simultaneous 8 channel data logger midi **LOGGER GL980** **NEW**



- Simultaneous sampling Isolated
- Max. 1MS/s (1µs)
- Voltage Temp., Humidity, Pulse/Logic
- Built-in RAM 4MS/ch
- Built-in Flash memory 4GB
- USB
- SDcard

- Multifunction analog inputs
 - Voltage** 20 mV to 500 V DC, 1-5 V DC, 10 mV to 250 V rms
 - Temp.** TC: K, J, E, T, R, S, B, N, W (WR65-26)
 - Humidity** 0 to 100% (the B-530 option is required)
- Pulse/Logic inputs
 - Pulse** 4 channels (*5) Accumulating, Instant or RPM
 - Logic** 4 channels (*5)
- 8ch High speed simultaneous sampling
- Includes 500 V measurement with 16-bit A/D converter
- Equipped with true-rms measurement
- Large built-in RAM (4 M sampling/ch) and built-in Flash memory (4 GB)
- Large easy-to-read 7-inch LCD

*5: Select either Pulse input or Logic input, and use the optional input/output cable for GL (B-513 option).

Modular Type Data Acquisition Unit DATA PLATFORM **GL7000**

- Hi-speed 1MS/s
- Multi-channels max.112ch
- High voltage 1000 V
- Huge memory capacity 128GB SSD



Supports touch panel
Supports the GL-Connection software
Allows to use with other units of GL series

* Example, the option of 6 modules and the display are installed.

| | | | | |
|---|--|---|--|---|
| Voltage Module Voltage 100v/unit Max. 1kS/s (1ms) Simultaneous sampling Isolated GL7-V | Voltage/Temperature Module Voltage, Temp. 100v/unit Max. 100S/s (10ms) A/D converter Type Isolated GL7-M | High speed Voltage Module High speed 4ch/unit Max. 1MS/s (10ms) Simultaneous sampling Isolated GL7-HSV | High Voltage Module Voltage 200v/unit Max. input voltage 1000V Max. 1MS/s (1µs) Isolated GL7-HV | DC Strain Module Strain, Voltage 200v/unit 4ch/unit Strain gauge, Sensor Max. 100kS/s (10µs) Isolated GL7-DCB |
| Charge Module Charge, Voltage 4ch/unit Charge, IEPE Sensor (TE03) Max. 100kS/s (10µs) Isolated GL7-CHA | Voltage Output Module Output voltage 80v/unit Max. 100kS/s (10µs) Captured data, Arbitrary waveform GL7-DCO | Logic/Pulse Module Logic/Pulse 10ch/unit Max. 1MS/s (10µs) Simultaneous sampling GL7-L/P | SSD Module 128 GB storage GL7-SSD | Display Module GL7-DISP |

* Optional input or output cable is required.

Options and Accessories

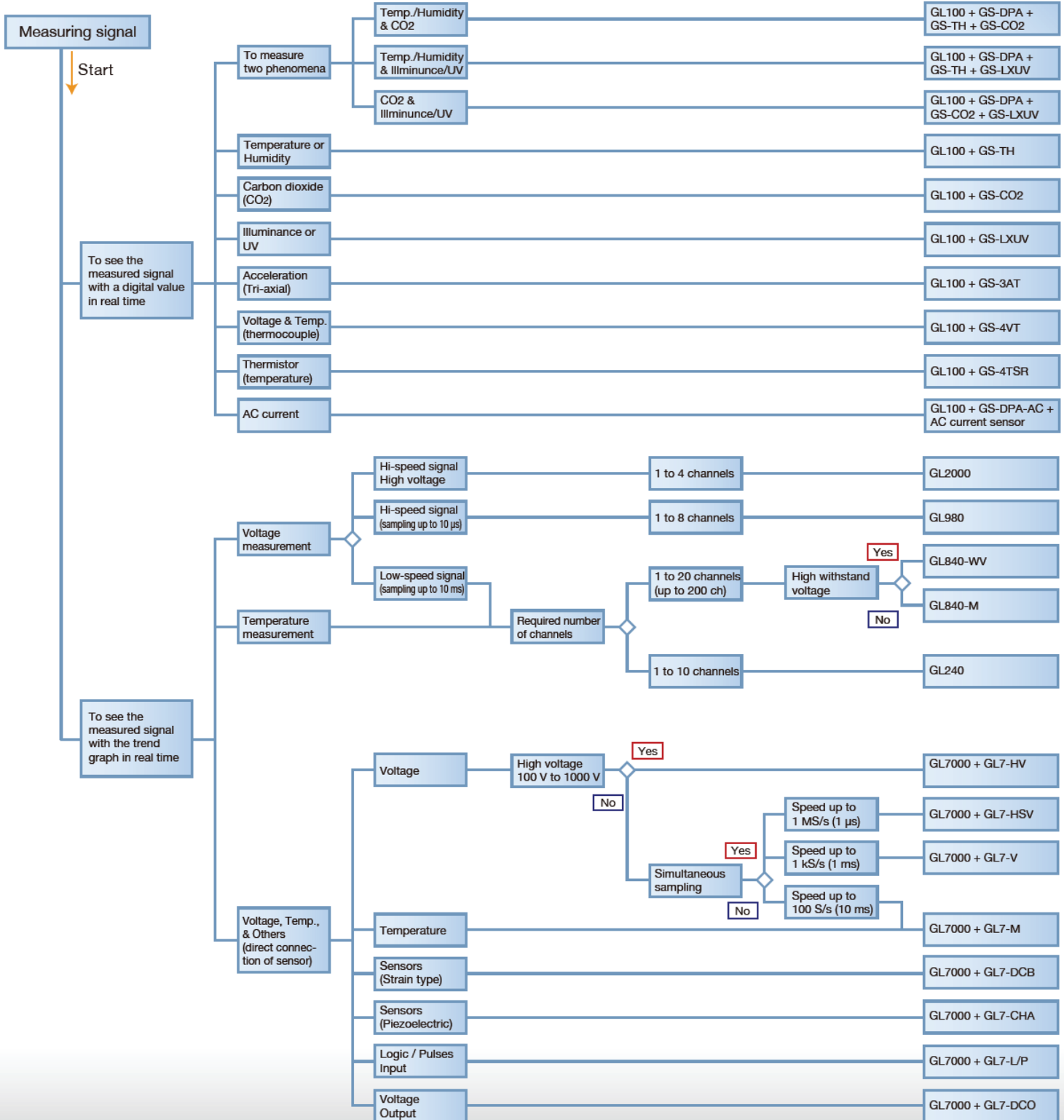
| Model | Item | GL240 | GL840 Series | GL2000/980 | GL7000 Series |
|--------------|---|-------|--------------|------------|---------------|
| B-513 | Input/Output cable for GL series | Yes | Yes | Yes | Yes |
| B-514 | DC drive cable | Yes | Yes | Yes | N/A |
| B-530 | Humidity sensor | Yes | Yes | Yes | Yes |
| B-564 | Input terminal (M type) | N/A | Yes | N/A | N/A |
| B-565 | Input terminal (WV type) | N/A | Yes | N/A | N/A |
| B-566 | Base of input terminal | N/A | Yes | N/A | N/A |
| B-567-05,-20 | Connection cable | N/A | Yes | N/A | N/A |
| B-568 | Wireless LAN unit | Yes | Yes | N/A | N/A |
| B-569 | Battery pack | Yes | Yes | Yes | N/A |
| ACADP-20 | AC power adapter | Yes | Yes | N/A | N/A |
| RIC-10 | Probe set for Logic input | N/A | N/A | N/A | Yes |
| RIC-141A | Input cable, Safe probe - BNC | N/A | N/A | Yes | Yes |
| RIC-142 | Input cable, BNC - BNC | N/A | N/A | Yes | Yes |
| RIC-143 | Input cable, Banana - BNC | N/A | N/A | Yes | Yes |
| RIC-144A | Clip, Alligator (small size) for RIC-143,147 | N/A | N/A | Yes | Yes |
| RIC-145 | Clip, Alligator (middle size) for RIC-143,147 | N/A | N/A | Yes | Yes |
| RIC-146 | Clip, Grabber for RIC-143,147 | N/A | N/A | Yes | Yes |
| RIC-147 | Input cable, Banana - BNC (High voltage) | N/A | N/A | Yes | Yes |

| | | | | | | | | | |
|--------|---------------------------|-----------------|-------------------------------|---------|-------------------|----------------------------------|-------------------------|----------|--------------------------|
| B-513 | Input / Output cable | B-514 | DC drive cable | B-530 | Humidity sensor | B-564 | Input terminal (M type) | B-565 | Input terminal (WV type) |
| B-566 | Base of input terminal | B-567-05 or -20 | Connection cable | B-568 | Wireless LAN unit | B-569 | Battery pack | ACADP-20 | AC power adapter |
| RIC-10 | Probe set for Logic input | RIC-141A | Input cable, Safe probe - BNC | RIC-142 | Input cable | RIC-143, -144A, -145, -146, -147 | Input cable, Clip | RIC-146 | |
| | | RIC-144A | | RIC-143 | | RIC-147 | | | |

Product selection guide ▶▶▶

There are a wide variety of measurement as faster signal in the vehicle and equipment test, or slower signal like the temperature in the environment test. The device to capture the signal needs to be selected to fit the required application.

* Please refer to the inside page of this document for details on each product.



- Due to the possibility of equipment or PC failure, the data files on the instrument will not be guaranteed to be held on the memory. Please make a backup of data whenever possible to avoid data loss.
- Brand names and product names listed in this brochure are the trademarks or registered trademarks of their respective owners.
- Items mentioned are subject to change without notice. For more information about product, please check the web site or contact your local representative.

⚠ For using equipment in correctly and safely : • Before using it, please read the user manual and then please use it properly in accordance with the description. • To avoid malfunction or an electric shock by current leakage or voltage, please ensure a ground connection and use according to the specification.

