



CATÁLOGO DE ADQUISICIÓN DE DATOS LOGICBUS

CATALOGO DE ADQUISICION DE DATOS

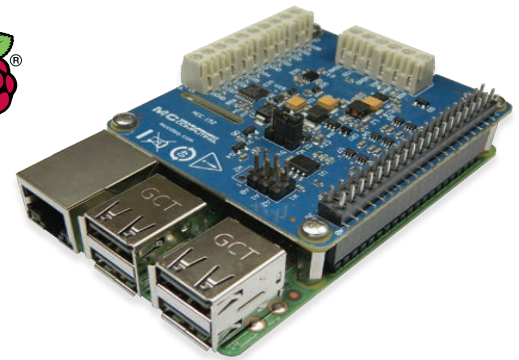
Creación de un DAQ moderno para la adquisición de datos DAQ HATs de Internet of Things para Raspberry Pi®

Los MCC DAQ HAT (Hardware adjunto en la parte superior) están diseñados para ser utilizados con Raspberry Pi, la computadora de una sola placa más popular en el mercado hoy en día. Lleve la medición de calidad profesional y la capacidad de E / S a esta plataforma de bajo costo.

| MODEL | MCC 118 | MCC 152 |
|-------------|----------|---------|
| Analog In | 8 | — |
| Analog Out | — | 2 |
| Sample Rate | 100 kS/s | — |
| Resolution | 12-Bit | 12-Bit |
| Digital I/O | — | 8 |

Perfecto para:

- Diseño de sistema integrado
- IoT industrial
- Prueba de fin de línea
- Monitoreo remoto
- Borde Computacional
- Validación/prueba de verificación



Registradores de datos habilitados para Internet **WebDAQ**

En una era de aplicaciones móviles y dispositivos conectados, la capacidad de acceder a sus datos de forma remota es más importante que nunca. WebDAQ ofrece una nueva arquitectura de registrador de datos que permite la configuración y el acceso a los datos desde cualquier parte del mundo.

| MODEL | WebDAQ 316 | WebDAQ 504 |
|-------------|-----------------|----------------|
| Inputs | 16 Thermocouple | 4 IEPE |
| Sample Rate | 75 S/s Max | 51 kS/s/Ch Max |
| Resolution | 24-Bit | 24-Bit |
| Digital I/O | 4 | 4 |
| Memory | Unlimited | Unlimited |



Logicbus proporciona soluciones de adquisición de datos para una amplia gama de aplicaciones e interfaces. Logicbus ofrece hardware, software y controladores de alta calidad para una solución rápida y personalizable para su aplicación única.

MULTIFUNCION DE 16 BITS

USB-230 Series

| | |
|----------------|----------------|
| Analog Inputs | 8 SE/4 DIFF |
| Resolution | 16-bit |
| Sample Rate | Up to 100 kS/s |
| Simultaneous | — |
| Isolated | — |
| Analog Outputs | 2 |
| Digital I/O | 8 |
| Counters | 1 x 32-bit |



- soporte de software para Windows

ALTA PRECISIÓN

USB-1808 Series

| | |
|----------------|-------------------|
| Analog Inputs | 8 SE/8 DIFF |
| Resolution | 18-bit |
| Sample Rate | Up to 200 kS/s/Ch |
| Simultaneous | ✓ |
| Isolated | — |
| Analog Outputs | 2 |
| Digital I/O | 4 |
| Counters | 2 x 32-bit† |



- Soporte de software para Windows y Linux.
- † 2 entradas de encoder de cuadratura

MULTIFUNCION ETHERNET

E-1608

| | |
|----------------|-------------|
| Analog Inputs | 8 SE/4 DIFF |
| Resolution | 16-bit |
| Sample Rate | 250 kS/s |
| Simultaneous | — |
| Isolated | — |
| Analog Outputs | 2 |
| Digital I/O | 8 |
| Counters | 1 x 32-bit |



- Soporte de software para Windows, Linux y Android.

SIMULTÁNEO DE ALTA VELOCIDAD

DT9832 Series

| | |
|----------------|-----------------|
| Analog Inputs | 2 or 4 SE |
| Resolution | 16-bit |
| Sample Rate | Up to 2 MS/s/Ch |
| Simultaneous | ✓ |
| Isolated | ✓ |
| Analog Outputs | Up to 2 |
| Digital I/O | 32 |
| Counters | 5 x 32-bit† |



- Soporte de software para Windows
- † 3 entradas de encoder de cuadratura

MULTIFUNCION DE ALTA VELOCIDAD

USB-1608G Series

| | |
|----------------|----------------|
| Analog Inputs | 16 SE/8 DIFF |
| Resolution | 16-bit |
| Sample Rate | Up to 500 kS/s |
| Simultaneous | — |
| Isolated | — |
| Analog Outputs | Up to 2 |
| Digital I/O | 8 |
| Counters | 2 x 32-bit |



- Soporte de software para Windows, Linux y Android.

SIMULTÁNEO AISLADO

DT8824/DT9824 (Ethernet, USB)

| | |
|----------------|-------------|
| Analog Inputs | 4 DIFF† |
| Resolution | 24-bit |
| Sample Rate | 4800 S/s/Ch |
| Simultaneous | ✓ |
| Isolated | ✓ |
| Analog Outputs | — |
| Digital I/O | Up to 16 |
| Counters | — |

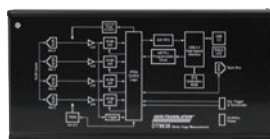


- soporte de software para Windows
- ± 500 V aislado de canal a canal

SENSORES A BASE DE PUENTE

DT9838

| | |
|-------------------------|--------------|
| Analog Inputs | 4 DIFF |
| Bridge Inputs | ✓ |
| Programmable Excitation | ✓ |
| Voltage Inputs | ±250 mV |
| Resolution | 24-bit |
| Sample Rate | 52.7 kS/s/Ch |
| Simultaneous | ✓ |
| Digital I/O | 1 Tachometer |



- Soporte de software para Windows

Multisensor

DT9829-8

| | |
|-----------------------------------|---------|
| Analog Inputs | 8 DIFF |
| Bridge Inputs | ✓ |
| Thermocouple, Resistance, Current | ✓ |
| Voltage Inputs | ✓ |
| Resolution | 24-bit |
| Sample Rate | 960 S/s |
| Simultaneous | — |
| Digital I/O | 8 |



- Soporte de software para Windows

Adquisición y control de datos

Logicbus proporciona soluciones de adquisición de datos para una amplia gama de aplicaciones e interfaces. Logicbus ofrece hardware, software y controladores de alta calidad para una solución rápida y personalizable para su aplicación única.

| DEVICE | Bus Type | Analog Inputs | Sample Rate | Resolution | Digital I/O | Counters | Analog Outputs |
|---------------------------------|-----------|---------------|-------------------|------------|-------------|----------|----------------|
| LOW COST | | | | | | | |
| USB-200 Series | USB | 8 SE | 500 kS/s | 12-bit | 8 | 1 | Up to 2 |
| USB-230 Series | USB | 8 SE/4 DIFF | 100 kS/s | 16-bit | 8 | 1 | 2 |
| MCC 118 | Rpi | 8 | 100 kS/s | 12-bit | — | — | — |
| MCC 152 | Rpi | — | — | 12-bit | 8 | — | 2 |
| BTH-1208LS | Bluetooth | 8 SE/4 DIFF | 1 kS/s | 12-bit | 8 | 1 | 2 |
| USB-1208LS | USB | 8 SE/4 DIFF | 1.2 kS/s | 12-bit | 16 | 1 | 2 |
| USB-1208FS-Plus | USB | 8 SE/4 DIFF | 50 kS/s | 12-bit | 16 | 1 | 2 |
| E-1608 | Ethernet | 8 SE/4 DIFF | 250 kS/s | 16-bit | 8 | 1 | 2 |
| USB-1608G Series | USB | 16 SE/8 DIFF | 500 kS/s | 16-bit | 8 | 2 | Up to 2 |
| DT9812/13/14 Series | USB | Up to 24 SE | Up to 100 kS/s | 12-bit | Up to 16 | 1 | 2 |
| SIMULTANEOUS | | | | | | | |
| USB-1808 | USB | 8 SE/8 DIFF | 50 kS/s/ch | 18-bit | 4 | 2* | 2 |
| USB-1808X | USB | 8 SE/8 DIFF | 200 kS/s/ch | 18-bit | 4 | 2* | 2 |
| USB-1608FS-Plus | USB | 8 SE | 100 kS/s/ch | 16-bit | 8 | 1 | — |
| DT9816 Series | USB | 6 SE | Up to 750 kS/s/ch | 16-bit | 16 | 1 | — |
| DT9832 BNC Series | USB | 2 or 4 SE | 2 MS/s/ch | 16-bit | 32 | 5* | Up to 2 |
| DT9836 BNC Series | USB | 6 or 12 SE | 225 kS/s/ch | 16-bit | 32 | 5* | Up to 4 |
| DT9826 | USB | 16 SE | 41.6 kS/s/ch | 24-bit | 16 | 2 | — |
| HIGH SPEED | | | | | | | |
| USB-1208HS | USB | 8 SE/4 DIFF | 1 MS/s | 13-bit | 16 | 2 | — |
| USB-2600 Series | USB | 16 or 64 SE | 1 MS/s | 16-bit | 24 | 4 | Up to 4 |
| USB-1616HS Series | USB | 16 SE/8 DIFF | 1 MS/s | 16-bit | 24 | 4 | Up to 4 |
| DT9834-16-4-16-BNC | USB | 16 SE/8 DIFF | 500 kS/s | 16-bit | 32 | 5 | 4 |
| DT9862 Series | USB | 2 SE | 10 MS/s/ch | 16-bit | 32 | 5* | Up to 2 |
| USB-2020 | USB | 2 SE | 20 MS/s/ch | 12-bit | 8 | — | — |
| HIGH PRECISION | | | | | | | |
| USB-2404 Series | USB | 4 DIFF | Up to 50 kS/s/ch | 24-bit | — | — | — |
| DT8824 | Ethernet | 4 DIFF | 4.8 kS/s/ch | 24-bit | 4 | — | — |
| DT9824 | USB | 4 DIFF | 4.8 kS/s/ch | 24-bit | 16 | — | — |
| DT9844 | USB | 32 SE/16 DIFF | 1 MS/s | 20-bit | 32 | 5 | — |
| DIGITAL I/O | | | | | | | |
| USB-1024LS | USB | — | — | — | 24 | 1 | — |
| USB-DIO32HS | USB | — | — | — | 32** | — | — |
| USB-DIO96H Series | USB | — | — | — | 96 | 1 | — |
| E-DIO24 | Ethernet | — | — | — | 24 | 1 | — |
| DT9810 | USB | 8 SE | 25 kS/s | 10-bit | 20 | 1 | — |
| COUNTER/TIMER | | | | | | | |
| USB-CTR Series | USB | — | — | — | 8** | 4 or 8** | — |
| ANALOG OUTPUT | | | | | | | |
| USB-3100 Series | USB | — | — | — | 8 | 1 | Up to 16 |
| USB-3101FS | USB | — | — | — | — | — | 4 |
| MIXED/UNIVERSAL INPUT*** | | | | | | | |
| USB-2404-UI | USB | 4 DIFF | 100 S/s/ch | 24-bit | — | — | — |
| SC-1608-USB | USB | 8 DIFF | 250 kS/s | 16-bit | 8 | 2 | — |
| SC-1608X-2AO-USB | USB | 8 DIFF | 500 kS/s | 16-bit | 8 | 2 | 2 |
| SC-1608-2AO-ENET | Ethernet | 8 DIFF | 250 kS/s | 16-bit | 8 | 1 | 2 |
| DT9829-8 | USB | 8 DIFF | 960 S/s | 24-bit | 4 | — | — |
| DT9838 | USB | 4 DIFF | 52.7 kS/s/ch | 24-bit | — | — | — |

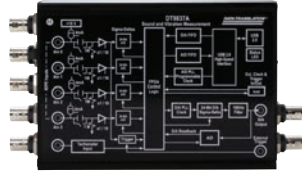
Sonido y vibración

Mida directamente acelerómetros de tipo IEPE o entradas de voltaje sin acondicionamiento de señal adicional mediante dispositivos de adquisición de datos USB y Ethernet (DAQ).

USB portátil

DT9837 Series

| | |
|----------------|---------------------|
| Analog Inputs | 4 SE† |
| Resolution | 24-bit |
| Sample Rate | Up to 105.4 kS/s/Ch |
| Simultaneous | ✓ |
| Isolated | — |
| Analog Outputs | Up to 1 |
| Digital I/O | — |
| Tachometer | Up to 1 |



Entradas IEPE directas, puerto de sincronización para expansión de canal

SER ÚNICO

WebDAQ 504

| | |
|----------------|------------|
| Analog Inputs | 4† |
| Resolution | 24-bit |
| Sample Rate | 51 kS/s/Ch |
| Simultaneous | ✓ |
| Isolated | — |
| Analog Outputs | — |
| Digital I/O | 4 |
| Tachometer | — |



† Entradas directas IEPE

CANTIDAD DE CANAL MEDIO USB

DT9857E Series

| | |
|----------------|---------------|
| Analog Inputs | 8 or 16 SE† |
| Resolution | 24-bit |
| Sample Rate | 105.4 kS/s/Ch |
| Simultaneous | ✓ |
| Isolated | — |
| Analog Outputs | 2 |
| Digital I/O | 16 |
| Tachometer | 1 |

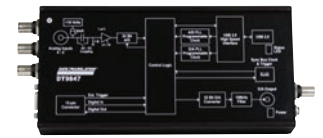


† Entradas IEPE directas, puerto de sincronización para expansión de canal

ANCHO ANCHO DE BANDA

DT9847 Series

| | |
|----------------|-------------|
| Analog Inputs | Up to 3 SE† |
| Resolution | 24-bit |
| Sample Rate | 216 kS/s/Ch |
| Simultaneous | ✓ |
| Isolated | — |
| Analog Outputs | Up to 2 |
| Digital I/O | 8 |
| Tachometer | — |



† Entradas IEPE directas, puerto de sincronización para expansión de canal
† Entradas IEPE directas, puerto de sincronización para expansión de canal

ETHERNET DE 4 CANALES

DT8837

| | |
|----------------|--------------|
| Analog Inputs | 4 IEPE |
| Resolution | 24-bit |
| Sample Rate | 52.7 kS/s/Ch |
| Simultaneous | ✓ |
| Analog Outputs | 1 |
| Digital I/O | 4 |
| Tachometer | 1 |



CONTEO DE ALTO CANAL USB

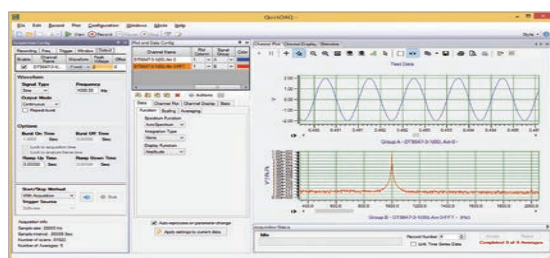
VIBbox

| | |
|----------------|---------------|
| Analog Inputs | Up to 64† |
| Resolution | 24-bit |
| Sample Rate | 105.4 kS/s/Ch |
| Simultaneous | ✓ |
| Isolated | — |
| Analog Outputs | Up to 8 |
| Digital I/O | Up to 64 |
| Tachometer | Up to 4 |



† Entradas IEPE directas, puerto de sincronización para expansión de canal

SOFTWARE DE VIBRACION QUICKDAQ



- Dos extensiones agregan capacidades de análisis FFT al paquete base gratuito
- Las opciones de análisis FFT de QuickDAQ permiten un análisis serio de sonido y vibración que admite el análisis modal y los métodos de análisis de SAO
- Operaciones FFT de un solo canal y de doble canal (respuesta de frecuencia)
- Alterne entre la interfaz basada en el tiempo del registrador de datos y la interfaz basada en bloque / promedio del analizador FFT

Medición de la temperatura

Logicbus ofrece una amplia selección de productos de medición de temperatura DAQ. Las soluciones de bajo costo, como el USB-TEMP, ofrecen entradas de termopar, RTD y termistor en un módulo.

USB DE BAJO COSTO

USB-TEMP and TC Series

| | |
|----------------|----------|
| Channels | 8 |
| Thermocouples | ✓ |
| RTD | ✓ |
| Voltage Inputs | — |
| Sample Rate | 2 S/s/Ch |
| Isolated | — |
| Analog Outputs | — |
| Digital I/O | 8 |



- Soporte de software para Windows, Linux, Android y macOS

SER ÚNICO

WebDAQ 316

| | |
|----------------|--------|
| Channels | 16 |
| Thermocouples | ✓ |
| RTD | — |
| Voltage Inputs | — |
| Sample Rate | 75 S/s |
| Isolated | — |
| Analog Outputs | — |
| Digital I/O | 4 |



CUENTA DE ALTO CANAL

TC-32 (Ethernet, USB)

| | |
|----------------|----------|
| Channels | Up to 64 |
| Thermocouples | ✓ |
| RTD | — |
| Voltage Inputs | — |
| Sample Rate | 3 S/s/Ch |
| Isolated | ✓ |
| Analog Outputs | — |
| Digital I/O | Up to 80 |



- Soporte de software para Windows, Linux y Android.

ALTA PRECISIÓN

MEASURpoint (Ethernet, USB)

| | |
|----------------|-------------|
| Channels | Up to 48† |
| Thermocouples | ✓ |
| RTD | ✓ |
| Voltage Inputs | Up to ±60 V |
| Sample Rate | 10 S/s/Ch |
| Isolated | ✓ |
| Analog Outputs | — |
| Digital I/O | 16 |



† 500 V de canal a canal aislado

| DISPOSITIVO | Canales | Entradas de termopar | RTD, termistor, semiconductor, entradas de temperatura | Entradas de voltaje | Frecuencia de muestreo |
|--------------------|---------|----------------------|--------------------------------------------------------|---------------------|------------------------|
| USB | | | | | |
| USB-TC | 8 | ✓ | — | — | 2 S/s/ch |
| USB-TEMP | 8 | ✓ | ✓ | — | 2 S/s/ch |
| USB-2408 | 8 | ✓ | — | ✓ | 1 kS/s |
| USB-2416 | 16* | ✓ | — | ✓ | 1 kS/s |
| USB-2001-TC | 1 | ✓ | — | — | 4 S/s |
| USB-2404-UI | 4 | ✓ | ✓ | ✓ | 100 S/s/ch |
| DT9874 MEASURpoint | 8 to 48 | ✓ | RTD | ✓ | 10 S/s/ch |
| DT9828 | 8 | ✓ | — | — | 600 S/s |
| DT9829-8 | 8 | ✓ | ✓ | ✓ | 960 S/s |
| WIRELESS | | | | | |
| WiFi-501 | 1†† | — | — | — | 10 sec to 12 hrs |
| WiFi-502 | 2† | — | — | — | 10 sec to 12 hrs |
| ETHERNET | | | | | |
| E-TC | 8 | ✓ | — | — | 4 S/s/ch |
| TC-32 | 32** | ✓ | — | — | 3 S/s/ch |
| DT8874 MEASURpoint | 8 to 48 | ✓ | RTD | ✓ | 10 S/s/ch |
| LOGGERS | | | | | |
| USB-501 | 1†† | — | — | — | 10 sec to 12 hrs |
| USB-502 | 2† | — | — | — | 10 sec to 12 hrs |
| USB-601 | 1†† | — | — | — | 10 sec to 2 hrs |
| USB-602 | 2† | — | — | — | 10 sec to 2 hrs |
| USB-603 | 2 | ✓ | — | — | 2 sec to 2 hrs |
| USB-5104 | 4 | ✓ | — | — | 1 sec to 18 hrs |
| USB-5106 | 4 | — | Temperature, Current, Voltage | ✓ | 1 sec to 18 hrs |
| WebDAQ 316 | 16 | ✓ | — | — | 75 S/s |

Registradores de datos

Registre y monitoree la temperatura, el voltaje, la corriente, la humedad y más utilizando registradores de datos portátiles e independientes.

BAJO COSTO

USB-500 Series

| | |
|-------------|-----------------------------------------|
| Channels | 1 or 2 |
| Measurement | Temperature, Humidity, Voltage, Current |
| Sample Rate | 1 sec to 12 hrs |
| Digital I/O | — |
| Memory | Up to 32 K Readings |
| Features | LCD Display |



Software incluido para USB-500/600 Series

MULTICANAL

USB-5100 Series

| | |
|-------------|--------------------------------|
| Channels | 4 |
| Measurement | Thermocouple, Current, Voltage |
| Sample Rate | 1 sec to 18 hrs |
| Digital I/O | — |
| Memory | Up to 1.9 Million Readings |
| Features | LCD Display |



• incluye software fácil de usar

Internet habilitado

WebDAQ Series

| | |
|-------------|---------------------|
| Channels | Up to 16 |
| Measurement | Thermocouple, IEPE |
| Sample Rate | Up to 51 kS/s/Ch |
| Digital I/O | 4 |
| Memory | Unlimited |
| Features | Embedded Web Server |



Industrial de alta velocidad

LGR-5320 Series

| | |
|-------------|--------------------|
| Channels | 16 SE/8 DIFF |
| Measurement | Up to ± 30 V |
| Sample Rate | Up to 200 kS/s† |
| Digital I/O | 16 |
| Memory | Up to 32 GB |
| Features | Quadrature Encoder |



• Incluye el software DATAlog para ponerlo en funcionamiento
† Señales analógicas y digitales correlacionadas

| DISPOSITIVO | Canales | Tipo de medida | Frecuencia de muestreo | Memoria | Características |
|--------------------|---------|-------------------------------|------------------------|----------------------|----------------------------------------------|
| LOW SPEED | | | | | |
| USB-501 | 1 | Temperature | 10 sec to 12 hrs | 16 K Readings | Status LEDs |
| USB-501-LCD | 1 | Temperature | 1 sec to 12 hrs | 16 K Readings | LCD Display |
| USB-501-LT | 1 | Temperature | 15 min up to 2 hrs | 4 K Readings | Ultra Compact |
| USB-501-PRO | 1 | Temperature | 1 sec to 12 hrs | 32 K Readings | Extended Temperature Range |
| USB-501-TC-LCD | 1 | Thermocouple | 1 sec to 12 hrs | 32 K Readings | LCD Display |
| USB-502 | 2 | Temperature, Humidity | 10 sec to 12 hrs | 16 K Readings | Status LEDs |
| USB-502-LCD | 2 | Temperature, Humidity | 10 sec to 12 hrs | 16 K Readings | LCD Display |
| USB-503 | 1 | 0 up to 30 VDC | 1 sec to 12 hrs | 32 K Readings | — |
| USB-504 | 1 | 4 up to 20 mA | 1 sec to 12 hrs | 32 K Readings | — |
| USB-601 | 1 | Temperature | 10 sec to 2 hrs | 250 K Readings | LCD Display |
| USB-602 | 2 | Temperature, Humidity | 10 sec to 2 hrs | 250 K Readings | LCD Display |
| USB-603 | 2 | Thermocouple | 2 sec to 2 hrs | 250 K Readings | LCD Display |
| USB-5104 | 4 | Thermocouple | 1 sec to 18 hrs | 1.6 Million Readings | LCD Display |
| USB-5106 | 4 | Temperature, Current, Voltage | 1 sec to 18 hrs | 1.9 Million Readings | LCD Display |
| HIGH SPEED | | | | | |
| LGR-5325 | 16 | ± 10 V | Up to 100 kS/s | 4 GB (Up to 32 GB) | 4 Counters |
| LGR-5329 | 16 | ± 30 V | Up to 200 kS/s | 4 GB (Up to 32 GB) | 4 Quadrature Inputs, Isolated Digital Inputs |
| WEB ENABLED | | | | | |
| WebDAQ 316 | 16 | Thermocouple | 75 S/s | Unlimited | Web Server |
| WebDAQ 504 | 4 | IEPE | 51 kS/s/Ch | Unlimited | Web Server |
| WIRELESS | | | | | |
| WiFi-501 | 1 | Temperature | 10 sec to 12 hrs | > 250 K Readings | LCD Display |
| WiFi-502 | 2 | Temperature, Humidity | 10 sec to 12 hrs | > 250 K Readings | LCD Display |

OEM y soluciones integradas

Soluciones solo para placa con conectores fáciles de integrar. Como proveedor líder de soluciones OEM DAQ, MCC ofrece precios por volumen y soporte técnico gratuito.

MULTIFUNCION USB

USB-201-OEM

| | |
|----------------|----------|
| Analog Inputs | 8 SE |
| Resolution | 12-bit |
| Sample Rate | 100 kS/s |
| Simultaneous | — |
| Analog Outputs | — |
| Digital I/O | 8 |
| Interface | USB |



- Soporte de software para Windows, Linux y Android.

MULTIFUNCION ETHERNET

E-1608-OEM

| | |
|----------------|-------------|
| Analog Inputs | 8 SE/4 DIFF |
| Resolution | 16-bit |
| Sample Rate | 250 kS/s |
| Simultaneous | — |
| Analog Outputs | 2 |
| Digital I/O | 8 |
| Interface | Ethernet |



- Soporte de software para Windows, Linux y Android.

ALTA VELOCIDAD

USB-2637

| | |
|----------------|--------|
| Analog Inputs | 64 SE |
| Resolution | 16-bit |
| Sample Rate | 1 MS/s |
| Simultaneous | — |
| Analog Outputs | 4 |
| Digital I/O | 24 |
| Interface | USB |



- Soporte de software para Windows, Linux y Android.

BRAZO DE ALTO RENDIMIENTO

DT7816

| | |
|----------------|------------------------|
| Analog Inputs | 8 SE |
| Resolution | 16-bit |
| Sample Rate | 400 kS/s/Ch |
| Simultaneous | ✓ |
| Analog Outputs | 2 |
| Digital I/O | 16 |
| Interface | Ethernet, USB, microSD |



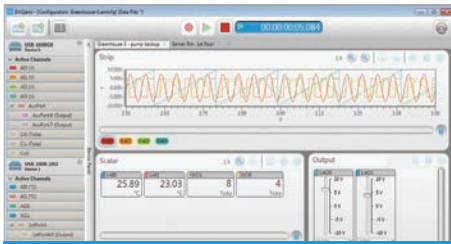
- Procesador ARM integrado y Linux a bordo

| DISPOSITIVO | Tipo de bus | Entradas analógicas | Frecuencia de muestreo | Resolución | Digital I/O | Contadores | Salidas Analógicas |
|----------------------|-------------|---------------------|------------------------|------------|-------------|------------|--------------------|
| LOW COST | | | | | | | |
| USB-200-OEM Series | USB | 8 SE | Up to 500 kS/s | 12-bit | 8 | 1 | Up to 2 |
| USB-230-OEM Series | USB | 8 SE/4 DIFF | Up to 100 kS/s | 16-bit | 8 | 1 | 2 |
| MCC 118 | Rpi | 8 | 100 kS/s | 12-bit | — | — | — |
| MCC 152 | Rpi | — | — | 12-bit | 8 | — | 2 |
| BTH-1208LS-OEM | Bluetooth | 8 SE/4 DIFF | 1 kS/s | 12-bit | 8 | 1 | 2 |
| USB-1208FS-Plus-OEM | USB | 8 SE/4 DIFF | 50 kS/s | 12-bit | 16 | 1 | 2 |
| E-1608-OEM | Ethernet | 8 SE/4 DIFF | 250 kS/s | 16-bit | 8 | 1 | 2 |
| USB-1608G-OEM Series | USB | 16 SE/8 DIFF | Up to 500 kS/s | 16-bit | 8 | 2 | Up to 2 |
| SIMULTANEOUS | | | | | | | |
| USB-1808 Series | USB | 8 SE/8 DIFF | Up to 200 kS/s/ch | 18-bit | 4 | 2* | 2 |
| USB-1608FS-Plus-OEM | USB | 8 SE | 100 kS/s/ch | 16-bit | 8 | 1 | — |
| DT9832/36-OEM Series | USB | 2, 4, 6 or 12 SE | Up to 2 MS/s/ch | 16-bit | 32 | 5* | Up to 4 |
| DT9837-OEM Series | USB | 4 SE with IEPE | Up to 105.4 kS/s/ch | 24-bit | — | 1 | Up to 1 |
| HIGH SPEED | | | | | | | |
| USB-2600 Series | USB | 16 or 64 SE | 1 MS/s | 16-bit | 24 | 4 | Up to 4 |
| DT9834-OEM Series | USB | 16 SE/8 DIFF | 500 kS/s | 16-bit | 32 | 5 | Up to 4 |
| DT9844-32-OEM | USB | 32 SE/16 DIFF | 1 MS/s | 20-bit | 32 | 5 | — |
| USB-2020 | USB | 2 SE | 20 MS/s/ch | 12-bit | 8 | — | — |
| DIGITAL I/O | | | | | | | |
| USB-DIO24 Series | USB | — | — | — | 24 | 1 | — |
| USB-DIO32HS-OEM | USB | — | — | — | 32** | — | — |
| USB-DIO96H/50 | USB | — | — | — | 96 | 1 | — |
| E-DIO24-OEM | Ethernet | — | — | — | 24 | 1 | — |
| COUNTER/TIMER | | | | | | | |
| USB-CTR-OEM Series | USB | — | — | — | 8** | 4 or 8** | — |

Software de adquisición de datos

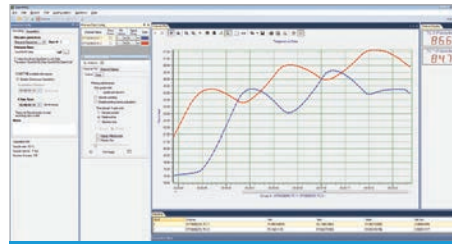
El soporte de software incluye software de registro y visualización de datos fácil de usar, controladores para las aplicaciones e idiomas más populares y soporte para varios sistemas operativos, incluidos Windows®, Linux®, Android™ y macOS®.

RAPIDO Y FACIL



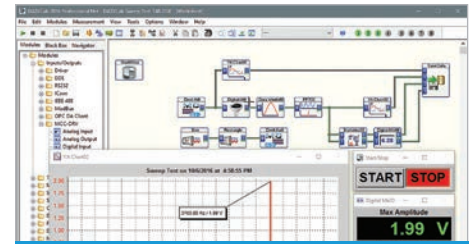
DAQami™

Software complementario para adquirir datos y generar señales con la mayoría de los dispositivos MCC.



QuickDAQ

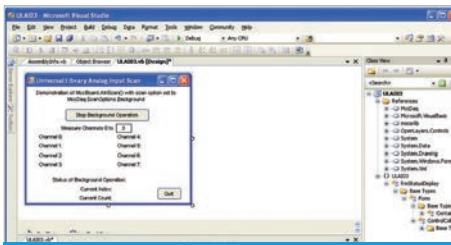
Adquiera y muestre desde la mayoría de los dispositivos de traducción de datos USB y Ethernet DAQ.



DASYLab™

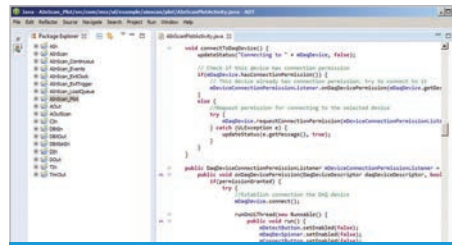
Análisis, control y GUI personalizados en tiempo real sin programación.

APOYO A LA PROGRAMACION



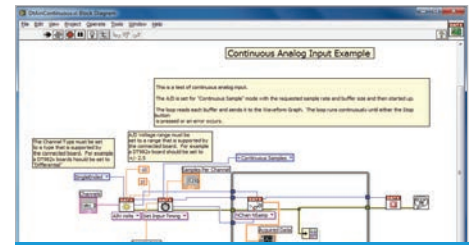
Windows®

API de programación para C®, C++®, C#®, Visual Basic®, Visual Basic® .NET™. Y Python™.



Linux® and Android™ Los

controladores profesionales están disponibles para la mayoría de los dispositivos MCC.



NI LabVIEW™ and MATLAB®

Biblioteca comprensiva de VIs y programas de ejemplo.



SOPORTE GRATUITO

El soporte técnico gratuito, durante la vida útil de su producto, está disponible a través de ingenieros de aplicaciones calificados.



30 DÍAS DE GARANTÍA DE DEVOLUCIÓN DE DINERO

Si no está satisfecho, simplemente devuelva el producto para obtener un reembolso completo (solo clientes de EE. UU.).



1 AÑO DE GARANTÍA

Todos los productos están respaldados con una garantía de un año. Compra con confianza.



ENVÍO GRATIS

MCC ofrece envío gratis en todos los pedidos realizados en línea. Los gastos de envío se aplican a todos los demás pedidos.