

BLOCK 01

NODE 01

NODE 04

NODE 05



GUIDE FOR DATA ACQUISITION BY LOGICBUS

NODE 05

BLOCK 01

NODE 01

NODE 02

```

mirror_mod = modifier_ob.
set mirror_mod.subject to mirror
mirror_mod.mirror_object
operation == "MIRROR_X":
mirror_mod.use_x = True
mirror_mod.use_y = False
mirror_mod.use_z = False
operation == "MIRROR_Y":
mirror_mod.use_x = False
mirror_mod.use_y = True
mirror_mod.use_z = False
operation == "MIRROR_Z":
mirror_mod.use_x = False
mirror_mod.use_y = False
mirror_mod.use_z = True

```

```

selection at the end -add
select= 1
select=1
context.scene.objects.active
"selected" + str(modifier
modifier_ob.select = 0
bpy.context.selected_object
data.objects[one.name].select

```

```

print("please select exactly
OPERATOR CLASSES -----

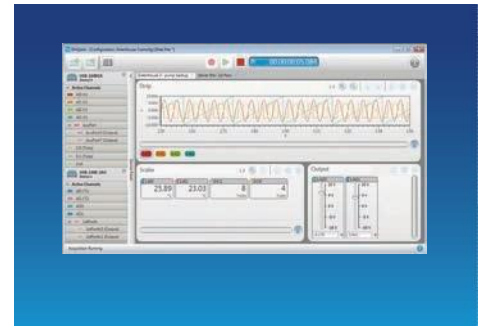
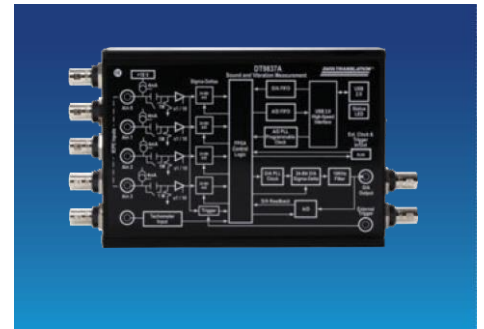
```

```

types.Operator):
X mirror to the selected
ject.mirror_mirror_x"
mirror X"
context):
context.active_object is not

```

DATA ACQUISITION



Data Acquisition and Control

Logicbus provides data acquisition solutions for a wide range of applications and interfaces. Logicbus offers high-quality hardware, software, and drivers for a quick and customizable solution to your unique application.

16-BIT MULTIFUNCTION

USB-230 Series

Analog Inputs	8 SE / 4 DIFF
Resolution	16- bits
Sample Rate	Up to 100 KS/s
Simultaneous	--
Isolated	--
Analog Outputs	2
Digital I/O	8
Counters	1 x 32-bits



Software support for Windows

HIGH-PRECISION

USB-1808 Series

Analog Inputs	8 DIFF
Resolution	18- bits
Sample Rate	Up to 200 kS/s/Ch
Simultaneous	✓
Isolated	--
Analog Outputs	2
Digital I/O	4
Counters	2 x 32-bits



Software support for Windows
† q2uadrature encoder inputs

ETHERNET MULTIFUNCTION

E-1608

Analog Inputs	8 SE / 4 DIFF
Resolution	16- bits
Sample Rate	250 kS/s
Simultaneous	--
Isolated	--
Analog Outputs	2
Digital I/O	8
Counters	1 x 32-bits



Software support for Windows, Linux and Android

HIGH-SPEED SIMULTANEOUS

DT9832 Series

Analog Inputs	2 or 4 SE
Resolution	16- bits
Sample Rate	Up to 2 MS/s/Ch
Simultaneous	✓
Isolated	✓
Analog Outputs	Up to 2
Digital I/O	32
Counters	5 x 32-bits



software support for Windows † q3uadrature encoder inputs

HIGH-SPEED MULTIFUNCTION

USB-1608G Series

Analog Inputs	16 SE/8 DIFF
Resolution	16- bits
Sample Rate	Up to 500 kS/s
Simultaneous	--
Isolated	--
Analog Outputs	Up to 2
Digital I/O	8
Counters	2 x 32-bits



Software support for Windows, Linux and Android

SOLATED SIMULTANEOUS

DT8824/DT9824

Analog Inputs	4 DIFF
Resolution	24- bits
Sample Rate	4800 S/s/Ch
Simultaneous	✓
Isolated	✓
Analog Outputs	-
Digital I/O	Up to 16
Counters	--

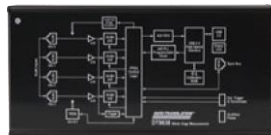


Software support for Windows
†±500 V Isolated channel-to- channel

BRIDGE-BASED SENSORS

DT9838

Analog Inputs	4 DIFF
Bridge Inputs	✓
Programmable Excitation	✓
Voltage Inputs	±250 mV
Resolution	24-bit
Sample Rate	52.7 kS/s/Ch
Simultaneous	✓
Digital I/O	1 Tachometer

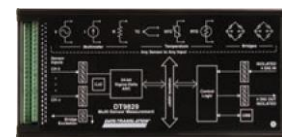


software support for Windows

MULTI SENSOR

DT9829-8

Analog Inputs	8 DIFF
Bridge Inputs	✓
Thermocouple, Resistance, Current	✓
Voltage Inputs	✓
Resolution	24-bit
Sample Rate	960 S/s
Simultaneous	--
Digital I/O	8



software support for Windows



Automation



Sensors



Industrial Computers



Data Acquisition



Test & Measurement Equipment



North America



Central and South America

Data Acquisition and Control

Logicbus provides data acquisition solutions for a wide range of applications and interfaces. Logicbus offers high-quality hardware, software, and drivers for a quick and customizable solution to your unique application.

DEVICE	Bus Type	Analog Inputs	Sample Rate	Resolution	Digital I/O	Counters	Analog Outputs
LOW COST							
USB-200 Series	USB	8 SE	500 kS/s	12-bit	8	1	Up to 2
USB-230 Series	USB	8 SE/4 DIFF	100 kS/s	16-bit	8	1	2
BTH-1208LS	Bluetooth	8 SE/4 DIFF	1 kS/s	12-bit	8	1	2
USB-1208LS	USB	8 SE/4 DIFF	1.2 kS/s	12-bit	16	1	2
USB-1208FS-Plus	USB	8 SE/4 DIFF	50 kS/s	12-bit	16	1	2
E-1608	Ethernet	8 SE/4 DIFF	250 kS/s	16-bit	8	1	2
USB-1608G Series	USB	16 SE/8 DIFF	500 kS/s	16-bit	8	2	Up to 2
DT9812/13/14 Series	USB	Up to 24 SE	100 kS/s	12-bit	Up to 16	1	2
DT9800 Series	USB	16 SE/8 DIFF	100 kS/s	12 or 16-bit	16	2	Up to 2
SIMULTANEOUS							
USB-1808	USB	8 DIFF	50 kS/s/ch	18-bit	4	2*	2
USB-1808X	USB	8 DIFF	200 kS/s/ch	18-bit	4	2*	2
USB-1608FS-Plus	USB	8 SE	100 kS/s/ch	16-bit	8	1	—
DT9816 Series	USB	6 SE	750 kS/s/ch	16-bit	16	1	—
DT9832 BNC Series	USB	2 or 4 SE	2 MS/s/ch	16-bit	32	5*	Up to 2
DT9836 BNC Series	USB	6 or 12 SE	225 kS/s/ch	16-bit	32	5*	Up to 4
DT9826	USB	16 SE	41.6 kS/s/ch	24-bit	16	2	—
HIGH SPEED							
USB-1208HS	USB	8 SE/4 DIFF	1 MS/s	13-bit	16	2	—
USB-2600 Series	USB	16 or 64 SE	1 MS/s	16-bit	24	4	Up to 4
USB-1616HS Series	USB	16 SE/8 DIFF	1 MS/s	16-bit	24	4	Up to 4
DT9834-16-4-16-BNC	USB	16 SE/8 DIFF	500 kS/s	16-bit	32	5	4
DT9862 Series	USB	2 SE	10 MS/s/ch	16-bit	32	5*	Up to 2
USB-2020	USB	2 SE	20 MS/s/ch	12-bit	8	—	—
HIGH PRECISION							
USB-2404 Series	USB	4 DIFF	50 kS/s/ch	24-bit	—	—	—
DT8824	Ethernet	4 DIFF	4.8 kS/s/ch	24-bit	4	—	—
DT9824	USB	4 DIFF	4.8 kS/s/ch	24-bit	16	—	—
DT9844	USB	32 SE/16 DIFF	1 MS/s	20-bit	32	5	—
DIGITAL I/O							
USB-1024LS	USB	—	—	—	24	1	—
USB-DIO32HS	USB	—	—	—	32**	—	—
USB-DIO96H Series	USB	—	—	—	96	1	—
E-DIO24	Ethernet	—	—	—	24	1	—
DT9810	USB	8 SE	25 kS/s	10-bit	20	1	—
COUNTER/TIMER							
USB-CTR04	USB	—	—	—	8**	4**	—
USB-CTR08	USB	—	—	—	8**	8**	—
ANALOG OUTPUT							
USB-3100 Series	USB	—	—	—	8	1	Up to 16
USB-3101FS	USB	—	—	—	—	—	4
MIXED/UNIVERSAL INPUT***							
USB-2404-UI	USB	4 DIFF	100 S/s/ch	24-bit	—	—	—
SC-1608-USB	USB	10 DIFF	250 kS/s	16-bit	8	2	—
SC-1608X-2AO-USB	USB	8 DIFF	500 kS/s	16-bit	8	2	2
SC-1608-2AO-ENET	Ethernet	8 DIFF	250 kS/s	16-bit	8	1	2
DT9829-8	USB	8 DIFF	960 S/s	24-bit	8	—	—
DT9838	USB	4 DIFF	52.7 kS/s/ch	24-bit	—	—	—

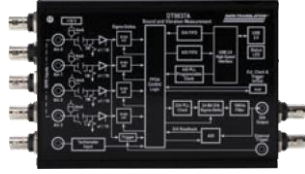
Sound and Vibration

Directly measure IEPE-type accelerometers or voltage inputs with no added signal conditioning using USB and Ethernet data acquisition (DAQ) devices.

PORTABLE USB

DT9837 Series

Analog Inputs	4 SE
Resolution	24- bits
Sample Rate	Up to 105.4 kS/s/Ch
Simultaneous	✓
Isolated	--
Analog Outputs	Up to 1
Digital I/O	--
Tachometer	Up to 1



direct IEPE inputs, sync port for channel expansion

STAND ALONE

WebDAQ 504

Analog Inputs	4
Resolution	24- bits
Sample Rate	51 kS/s/Ch
Simultaneous	✓
Isolated	--
Analog Outputs	--
Digital I/O	4
Tachometer	--



direct IEPE inputs

MEDIUM-CHANNEL COUNT USB

DT9857E Series

Analog Inputs	8 or 16 SE†
Resolution	24- bits
Sample Rate	Up to 105.4 kS/s/Ch
Simultaneous	✓
Isolated	--
Analog Outputs	2
Digital I/O	16
Tachometer	1

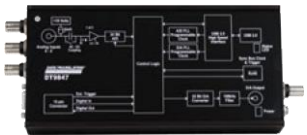


direct IEPE inputs, sync port for channel expansion

WIDE BANDWIDTH USB

DT9847 Series

Analog Inputs	Up to 3 SE
Resolution	24-bit
Sample Rate	216 kS/s/Ch
Simultaneous	✓
Isolated	--
Analog Outputs	Up to 2
Digital I/O	8
Tachometer	--



direct IEPE inputs, sync port for channel expansion

SIGNAL ANALYZER ARM

DT7837

Analog Inputs	4 IEPE
Resolution	24-bit
Sample Rate	105.4 kS/s/Ch
Simultaneous	✓
Isolated	--
Analog Outputs	1
Digital I/O	16
Interface	Ethernet, USB, microSD



• Embedded ARM processor and Linux on-board

HIGH-CHANNEL COUNT USB

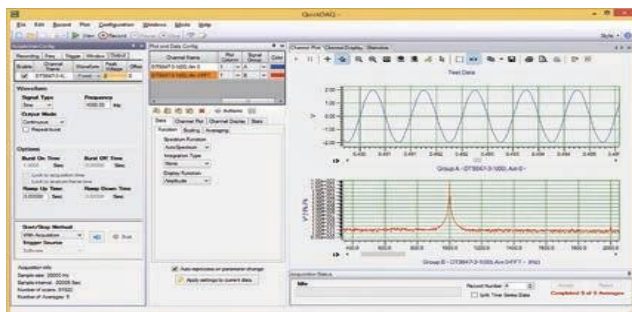
VIBbox

Analog Inputs	Up to 64
Resolution	24- bits
Sample Rate	105.4 kS/s/Ch
Simultaneous	✓
Isolated	--
Analog Outputs	Up to 8
Digital I/O	Up to 64
Tachometer	Up to 4



direct IEPE inputs, sync port for channel expansion

QUICKDAQ VIBRATION SOFTWARE







- ✓ Two extensions add FFT analysis capabilities to the free base package
- ✓ QuickDAQ FFT Analysis Options allow serious sound & vibration analysis supporting modal analysis and ODS analysis methods
- ✓ Single-Channel and Dual-Channel (frequency response) FFT operations
- ✓ Switch between the Data Logger time-based interface and the FFT Analyzer block/average-based interface



Temperature Measurement

Logicbus offers a wide selection of temperature measurement DAQ products. Low-cost solutions such as the USB-TEMP offer thermocouple, RTD and thermistor inputs in one module.

LOW-COST USB		STAND ALONE																																	
USB-TEMP and TC Series <table border="1"> <tr><td>Channels</td><td>8</td></tr> <tr><td>Thermocouples</td><td>✓</td></tr> <tr><td>RTD</td><td>✓</td></tr> <tr><td>Voltage Inputs</td><td>--</td></tr> <tr><td>Sample Rate</td><td>2 S/s/Ch</td></tr> <tr><td>Isolated</td><td>--</td></tr> <tr><td>Analog Outputs</td><td>--</td></tr> <tr><td>Digital I/O</td><td>8</td></tr> </table>  <p>software support for Windows, Linux and Android</p>		Channels	8	Thermocouples	✓	RTD	✓	Voltage Inputs	--	Sample Rate	2 S/s/Ch	Isolated	--	Analog Outputs	--	Digital I/O	8	WebDAQ 316 <table border="1"> <tr><td>Channels</td><td>16</td></tr> <tr><td>Thermocouples</td><td>✓</td></tr> <tr><td>RTD</td><td>--</td></tr> <tr><td>Voltage Inputs</td><td>--</td></tr> <tr><td>Sample Rate</td><td>75 S/s</td></tr> <tr><td>Isolated</td><td>--</td></tr> <tr><td>Analog Outputs</td><td>--</td></tr> <tr><td>Digital I/O</td><td>4</td></tr> </table> 		Channels	16	Thermocouples	✓	RTD	--	Voltage Inputs	--	Sample Rate	75 S/s	Isolated	--	Analog Outputs	--	Digital I/O	4
Channels	8																																		
Thermocouples	✓																																		
RTD	✓																																		
Voltage Inputs	--																																		
Sample Rate	2 S/s/Ch																																		
Isolated	--																																		
Analog Outputs	--																																		
Digital I/O	8																																		
Channels	16																																		
Thermocouples	✓																																		
RTD	--																																		
Voltage Inputs	--																																		
Sample Rate	75 S/s																																		
Isolated	--																																		
Analog Outputs	--																																		
Digital I/O	4																																		
HIGH-CHANNEL COUNT		WIDE BANDWIDTH USB																																	
TC-32 <table border="1"> <tr><td>Channels</td><td>Up to 64</td></tr> <tr><td>Thermocouples</td><td>✓</td></tr> <tr><td>RTD</td><td>--</td></tr> <tr><td>Voltage Inputs</td><td>--</td></tr> <tr><td>Sample Rate</td><td>3 S/s/Ch</td></tr> <tr><td>Isolated</td><td>--</td></tr> <tr><td>Analog Outputs</td><td>--</td></tr> <tr><td>Digital I/O</td><td>Up to 80</td></tr> </table>  <p>Software support for Windows, Linux and Android</p>		Channels	Up to 64	Thermocouples	✓	RTD	--	Voltage Inputs	--	Sample Rate	3 S/s/Ch	Isolated	--	Analog Outputs	--	Digital I/O	Up to 80	DT9847 Series <table border="1"> <tr><td>Channels</td><td>Up to 48</td></tr> <tr><td>Thermocouples</td><td>✓</td></tr> <tr><td>RTD</td><td>✓</td></tr> <tr><td>Voltage Inputs</td><td>Up to ±400 V</td></tr> <tr><td>Sample Rate</td><td>10 S/s/Ch</td></tr> <tr><td>Isolated</td><td>✓</td></tr> <tr><td>Analog Outputs</td><td>--</td></tr> <tr><td>Digital I/O</td><td>16</td></tr> </table>  <p>±500 V isolated channel-to-channel</p>		Channels	Up to 48	Thermocouples	✓	RTD	✓	Voltage Inputs	Up to ±400 V	Sample Rate	10 S/s/Ch	Isolated	✓	Analog Outputs	--	Digital I/O	16
Channels	Up to 64																																		
Thermocouples	✓																																		
RTD	--																																		
Voltage Inputs	--																																		
Sample Rate	3 S/s/Ch																																		
Isolated	--																																		
Analog Outputs	--																																		
Digital I/O	Up to 80																																		
Channels	Up to 48																																		
Thermocouples	✓																																		
RTD	✓																																		
Voltage Inputs	Up to ±400 V																																		
Sample Rate	10 S/s/Ch																																		
Isolated	✓																																		
Analog Outputs	--																																		
Digital I/O	16																																		

DEVICE	Channels	Thermocouple Inputs	RTD, Thermistor, Semiconductor, Temperature Inputs	Voltage Inputs	Sample Rate
USB					
USB-TC	8	✓	—	—	2 S/s/ch
USB-TEMP	8	✓	✓	—	2 S/s/ch
USB-2408	8	✓	—	✓	1 kS/s
USB-2416	16*	✓	—	✓	1 kS/s
USB-2001-TC	1	✓	—	—	4 S/s
USB-2404-UI	4	✓	✓	✓	100 S/s/ch
DT9874 MEASURpoint	8 to 48	✓	RTD	✓	10 S/s/ch
DT9828	8	✓	—	—	600 S/s
DT9829-8	8	✓	✓	✓	960 S/s
WIRELESS					
WiFi-501	1††	—	—	—	10 sec to 12 hrs
WiFi-502	2†	—	—	—	10 sec to 12 hrs
ETHERNET					
E-TC	8	✓	—	—	4 S/s/ch
TC-32	32**	✓	—	—	3 S/s/ch
DT8874 MEASURpoint	8 to 48	✓	RTD	✓	10 S/s/ch
LOGGERS					
USB-501	1††	—	—	—	10 sec to 12 hrs
USB-502	2†	—	—	—	10 sec to 12 hrs
USB-601	1††	—	—	—	10 sec to 2 hrs
USB-602	2†	—	—	—	10 sec to 2 hrs
USB-603	2	✓	—	—	2 sec to 2 hrs
USB-5104	4	✓	—	—	1 sec to 18 hrs
USB-5106	4	—	Temperature, Current, Voltage	✓	1 sec to 18 hrs
WebDAQ 316	16	✓	—	—	75 S/s

Data Loggers

Record and monitor temperature, voltage, current, humidity and more using portable, stand-alone data loggers.





LOW-COST		MULTI-CHANNEL													
<h3>USB-500 Series</h3> <table border="1"> <tr><td>Channels</td><td>1 or 2</td></tr> <tr><td>Measurement</td><td>Temperature, Humidity, Voltage, Current</td></tr> <tr><td>Sample Rate</td><td>1 sec to 12 hrs</td></tr> <tr><td>Digital I/O</td><td>--</td></tr> <tr><td>Memory</td><td>Up to 32 K Readings</td></tr> <tr><td>Features</td><td>LCD Display</td></tr> </table>		Channels	1 or 2	Measurement	Temperature, Humidity, Voltage, Current	Sample Rate	1 sec to 12 hrs	Digital I/O	--	Memory	Up to 32 K Readings	Features	LCD Display	 <p>Included software for USB-500/600 Series</p>	
Channels	1 or 2														
Measurement	Temperature, Humidity, Voltage, Current														
Sample Rate	1 sec to 12 hrs														
Digital I/O	--														
Memory	Up to 32 K Readings														
Features	LCD Display														
<h3>USB-5100 Series</h3> <table border="1"> <tr><td>Channels</td><td>4</td></tr> <tr><td>Measurement</td><td>Thermocouple, Current, Voltage</td></tr> <tr><td>Sample Rate</td><td>1 sec to 18 hrs</td></tr> <tr><td>Digital I/O</td><td>--</td></tr> <tr><td>Memory</td><td>Up to 1.9 Million Readings</td></tr> <tr><td>Features</td><td>LCD Display</td></tr> </table>		Channels	4	Measurement	Thermocouple, Current, Voltage	Sample Rate	1 sec to 18 hrs	Digital I/O	--	Memory	Up to 1.9 Million Readings	Features	LCD Display	 <p>Includes easy-to-use software</p>	
Channels	4														
Measurement	Thermocouple, Current, Voltage														
Sample Rate	1 sec to 18 hrs														
Digital I/O	--														
Memory	Up to 1.9 Million Readings														
Features	LCD Display														
INTERNET ENABLED		WIDE BANDWIDTH USB													
<h3>WebDAQ Series</h3> <table border="1"> <tr><td>Channels</td><td>Up to 16</td></tr> <tr><td>Measurement</td><td>Thermocouple, IEPE</td></tr> <tr><td>Sample Rate</td><td>Up to 51 kS/s/Ch</td></tr> <tr><td>Digital I/O</td><td>4</td></tr> <tr><td>Memory</td><td>Unlimited</td></tr> <tr><td>Features</td><td>Embedded Web Server</td></tr> </table>		Channels	Up to 16	Measurement	Thermocouple, IEPE	Sample Rate	Up to 51 kS/s/Ch	Digital I/O	4	Memory	Unlimited	Features	Embedded Web Server		
Channels	Up to 16														
Measurement	Thermocouple, IEPE														
Sample Rate	Up to 51 kS/s/Ch														
Digital I/O	4														
Memory	Unlimited														
Features	Embedded Web Server														
<h3>DT9847 Series</h3> <table border="1"> <tr><td>Channels</td><td>16 SE/8 DIFF</td></tr> <tr><td>Measurement</td><td>Up to ±30 V</td></tr> <tr><td>Sample Rate</td><td>Up to 200 kS/s</td></tr> <tr><td>Digital I/O</td><td>16</td></tr> <tr><td>Memory</td><td>Up to 32 GB</td></tr> <tr><td>Features</td><td>Quadrature Encoder</td></tr> </table>		Channels	16 SE/8 DIFF	Measurement	Up to ±30 V	Sample Rate	Up to 200 kS/s	Digital I/O	16	Memory	Up to 32 GB	Features	Quadrature Encoder	 <p>Included DAQLog software to get you up and running †Correlated analog and digital signals</p>	
Channels	16 SE/8 DIFF														
Measurement	Up to ±30 V														
Sample Rate	Up to 200 kS/s														
Digital I/O	16														
Memory	Up to 32 GB														
Features	Quadrature Encoder														

DEVICE	Channels	Measurement Type	Sample Rate	Memory	Features
LOW SPEED					
USB-501	1	Temperature	10 sec to 12 hrs	16 K Readings	Status LEDs
USB-501-LCD	1	Temperature	1 sec to 12 hrs	16 K Readings	LCD Display
USB-501-LT	1	Temperature	15 min up to 2 hrs	4 K Readings	Ultra Compact
USB-501-PRO	1	Temperature	1 sec to 12 hrs	32 K Readings	Extended Temperature Range
USB-501-TC-LCD	1	Thermocouple	1 sec to 12 hrs	32 K Readings	LCD Display
USB-502	2	Temperature, Humidity	10 sec to 12 hrs	16 K Readings	Status LEDs
USB-502-LCD	2	Temperature, Humidity	10 sec to 12 hrs	16 K Readings	LCD Display
USB-503	1	0 up to 30 VDC	1 sec to 12 hrs	32 K Readings	--
USB-504	1	4 up to 20 mA	1 sec to 12 hrs	32 K Readings	--
USB-601	1	Temperature	10 sec to 2 hrs	250 K Readings	LCD Display
USB-602	2	Temperature, Humidity	10 sec to 2 hrs	250 K Readings	LCD Display
USB-603	2	Thermocouple	2 sec to 2 hrs	250 K Readings	LCD Display
USB-5104	4	Thermocouple	1 sec to 18 hrs	1.6 Million Readings	LCD Display
USB-5106	4	Temperature, Current, Voltage	1 sec to 18 hrs	1.9 Million Readings	LCD Display
HIGH SPEED					
LGR-5325	16	±10 V	Up to 100 kS/s	4 GB (Up to 32 GB)	4 Counters
LGR-5329	16	±30 V	Up to 200 kS/s	4 GB (Up to 32 GB)	4 Quadrature Inputs, Isolated Digital Inputs
WEB ENABLED					
WebDAQ 316	16	Thermocouple	75 S/s	Unlimited	Web Server
WebDAQ 504	4	IEPE	51 kS/s/Ch	Unlimited	Web Server
WIRELESS					
WiFi-501	1	Temperature	10 sec to 12 hrs	> 250 K Readings	LCD Display
WiFi-502	2	Temperature, Humidity	10 sec to 12 hrs	> 250 K Readings	LCD Display



OEM and Embedded Solutions

Board-only solutions with easy to integrate connectors. As a leading supplier of OEM DAQ solutions, Logicbus provides volume pricing and free technical support.

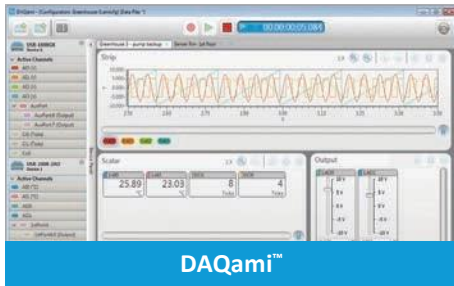
MULTIFUNCTION USB		MULTIFUNCTION ETHERNET																											
<p>USB-201-OEM</p> <table border="1"> <tr><td>Analog Inputs</td><td>8 SE</td></tr> <tr><td>Resolution</td><td>12-bit</td></tr> <tr><td>Sample Rate</td><td>100 kS/s</td></tr> <tr><td>Simultaneous</td><td>--</td></tr> <tr><td>Analog Outputs</td><td>--</td></tr> <tr><td>Digital I/O</td><td>8</td></tr> <tr><td>Interface</td><td>USB</td></tr> </table>  <p>Software support for Windows, Linux and Android</p>	Analog Inputs	8 SE	Resolution	12-bit	Sample Rate	100 kS/s	Simultaneous	--	Analog Outputs	--	Digital I/O	8	Interface	USB	<p>E-1608-OEM</p> <table border="1"> <tr><td>Analog Inputs</td><td>8 SE/4 DIFF</td></tr> <tr><td>Resolution</td><td>16-bit</td></tr> <tr><td>Sample Rate</td><td>250 kS/s</td></tr> <tr><td>Simultaneous</td><td>--</td></tr> <tr><td>Analog Outputs</td><td>2</td></tr> <tr><td>Digital I/O</td><td>8</td></tr> <tr><td>Interface</td><td>Ethernet</td></tr> </table>  <p>Software support for Windows, Linux and Android</p>	Analog Inputs	8 SE/4 DIFF	Resolution	16-bit	Sample Rate	250 kS/s	Simultaneous	--	Analog Outputs	2	Digital I/O	8	Interface	Ethernet
Analog Inputs	8 SE																												
Resolution	12-bit																												
Sample Rate	100 kS/s																												
Simultaneous	--																												
Analog Outputs	--																												
Digital I/O	8																												
Interface	USB																												
Analog Inputs	8 SE/4 DIFF																												
Resolution	16-bit																												
Sample Rate	250 kS/s																												
Simultaneous	--																												
Analog Outputs	2																												
Digital I/O	8																												
Interface	Ethernet																												
HIGH SPEED		HIGH-PERFORMANCE ARM																											
<p>USB-2637</p> <table border="1"> <tr><td>Analog Inputs</td><td>64 SE</td></tr> <tr><td>Resolution</td><td>16-bit</td></tr> <tr><td>Sample Rate</td><td>1 MS/s</td></tr> <tr><td>Simultaneous</td><td>--</td></tr> <tr><td>Analog Outputs</td><td>4</td></tr> <tr><td>Digital I/O</td><td>24</td></tr> <tr><td>Interface</td><td>USB</td></tr> </table>  <p>Software support for Windows, Linux and Android</p>	Analog Inputs	64 SE	Resolution	16-bit	Sample Rate	1 MS/s	Simultaneous	--	Analog Outputs	4	Digital I/O	24	Interface	USB	<p>DT7816</p> <table border="1"> <tr><td>Analog Inputs</td><td>8 SE</td></tr> <tr><td>Resolution</td><td>16-bit</td></tr> <tr><td>Sample Rate</td><td>400 kS/s/Ch</td></tr> <tr><td>Simultaneous</td><td>✓</td></tr> <tr><td>Analog Outputs</td><td>2</td></tr> <tr><td>Digital I/O</td><td>16</td></tr> <tr><td>Interface</td><td>Ethernet, USB, microSD</td></tr> </table>  <p>ARM processor and Linux on-board</p>	Analog Inputs	8 SE	Resolution	16-bit	Sample Rate	400 kS/s/Ch	Simultaneous	✓	Analog Outputs	2	Digital I/O	16	Interface	Ethernet, USB, microSD
Analog Inputs	64 SE																												
Resolution	16-bit																												
Sample Rate	1 MS/s																												
Simultaneous	--																												
Analog Outputs	4																												
Digital I/O	24																												
Interface	USB																												
Analog Inputs	8 SE																												
Resolution	16-bit																												
Sample Rate	400 kS/s/Ch																												
Simultaneous	✓																												
Analog Outputs	2																												
Digital I/O	16																												
Interface	Ethernet, USB, microSD																												

DEVICE	Bus Type	Analog Inputs	Sample Rate	Resolution	Digital I/O	Counters	Analog Outputs
LOW COST							
USB-200-OEM Series	USB	8 SE	Up to 500 kS/s	12-bit	8	1	Up to 2
USB-230-OEM Series	USB	8 SE/4 DIFF	Up to 100 kS/s	16-bit	8	1	2
BTH-1208LS-OEM	Bluetooth	8 SE/4 DIFF	1 kS/s	12-bit	8	1	2
USB-1208FS-Plus-OEM	USB	8 SE/4 DIFF	50 kS/s	12-bit	16	1	2
E-1608-OEM	Ethernet	8 SE/4 DIFF	250 kS/s	16-bit	8	1	2
USB-1608G-OEM Series	USB	16 SE/8 DIFF	Up to 500 kS/s	16-bit	8	2	Up to 2
DT9812-10V-OEM	USB	8 SE	50 kS/s	12-bit	16	1	2
SIMULTANEOUS							
USB-1808 Series	USB	8 DIFF	Up to 200 kS/s/ch	18-bit	4	2*	2
USB-1608FS-Plus-OEM	USB	8 SE	100 kS/s/ch	16-bit	8	1	—
DT9832/36-OEM Series	USB	2, 4, 6 or 12 SE	Up to 2 MS/s/ch	16-bit	32	5*	Up to 2
DT9837-OEM Series	USB	4 SE with IEPE	Up to 105.4 kS/s/ch	24-bit	—	1	Up to 1
DT9857E-OEM Series	USB	Up to 16 SE with IEPE	105.4 kS/s/ch	24-bit	16	Tacho +3	2
HIGH SPEED							
USB-2600 Series	USB	16 or 64 SE	1 MS/s	16-bit	24	4	Up to 4
DT9834-OEM Series	USB	16 SE/8 DIFF	500 kS/s	16-bit	32	5	Up to 4
DT9844-32-OEM	USB	32 SE/16 DIFF	1 MS/s	20-bit	32	5	—
USB-2020	USB	2 SE	20 MS/s/ch	12-bit	8	—	—
DIGITAL I/O							
USB-DIO24 Series	USB	—	—	—	24	1	—
USB-DIO32HS-OEM	USB	—	—	—	32**	—	—
USB-DIO96H/50	USB	—	—	—	96	1	—
E-DIO24-OEM	Ethernet	—	—	—	24	1	—
COUNTER/TIMER							
USB-CTR-OEM Series	USB	—	—	—	8**	4 or 8**	—

Data Acquisition Software

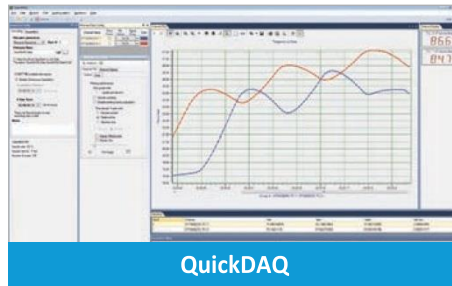
Software support includes easy-to-use data viewing and logging software, drivers for the most popular applications and languages, and support for various operating systems including Windows®, Linux®, and Android™.

QUICK AND EASY



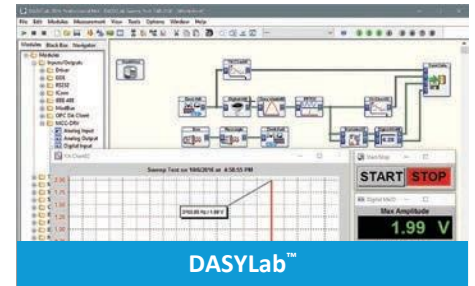
DAQami™

Companion software for acquiring data and generating signals with most MCC devices.



QuickDAQ

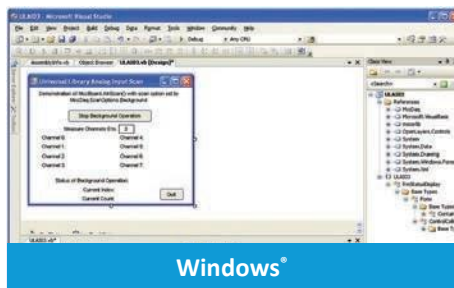
Acquire and display from most Data Translation USB and Ethernet DAQ devices.



DASYLab™

Real-time analysis, control, and custom GUI's without programming.

PROGRAMMING SUPPORT



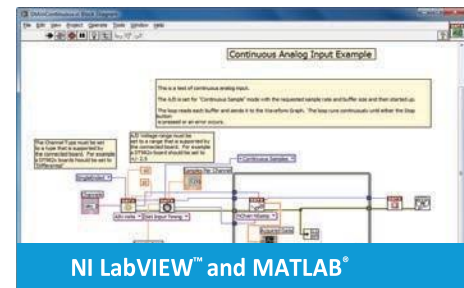
Windows®

Programming API for C®, C++®, C#®, Visual Basic®, Visual Basic® .NET™, and Python™.



Linux® and Android™

Professional drivers are available for most MCC devices.



NI LabVIEW™ and MATLAB®

Comprehensive library of VIs and example programs.

WebDAQ Internet Enabled Data Loggers

In an age of mobile applications and connected devices, the ability to access your data remotely is more important than ever. WebDAQ offers a new data logger architecture that allows configuration and access to the data from anywhere in the world.

MODEL	WebDAQ 316	WebDAQ 504
Inputs	16 Thermocouple	4 IEPE
Sample Rate	75 S/s Max	51 kS/s/Ch Max
Resolution	24-Bit	24-Bit
Digital I/O	4	4
Memory	Unlimited	Unlimited

