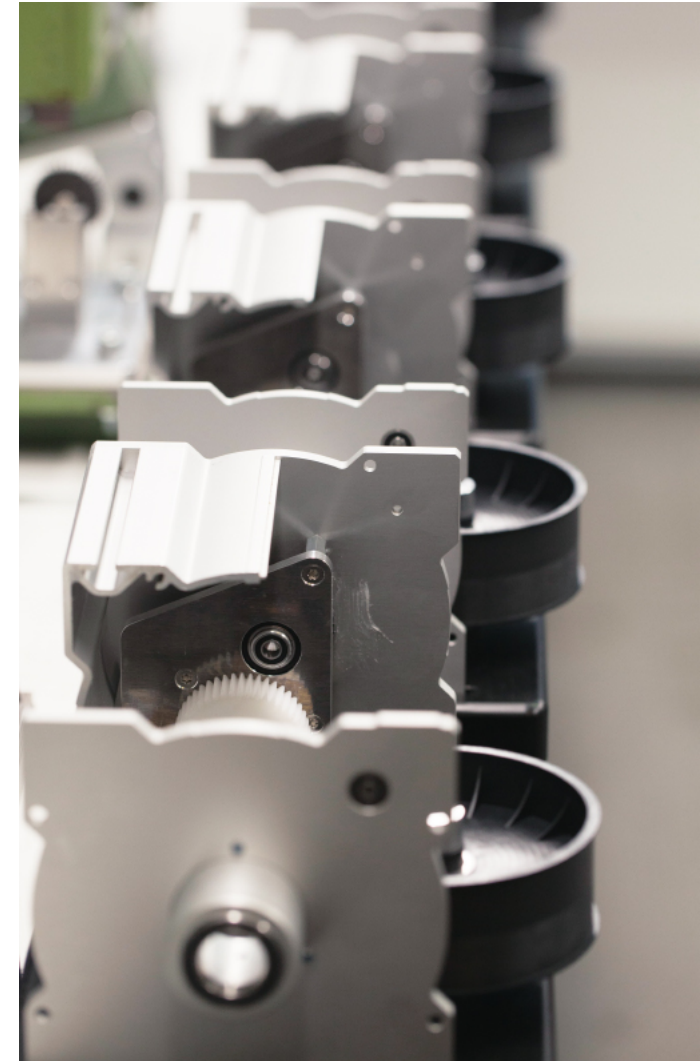
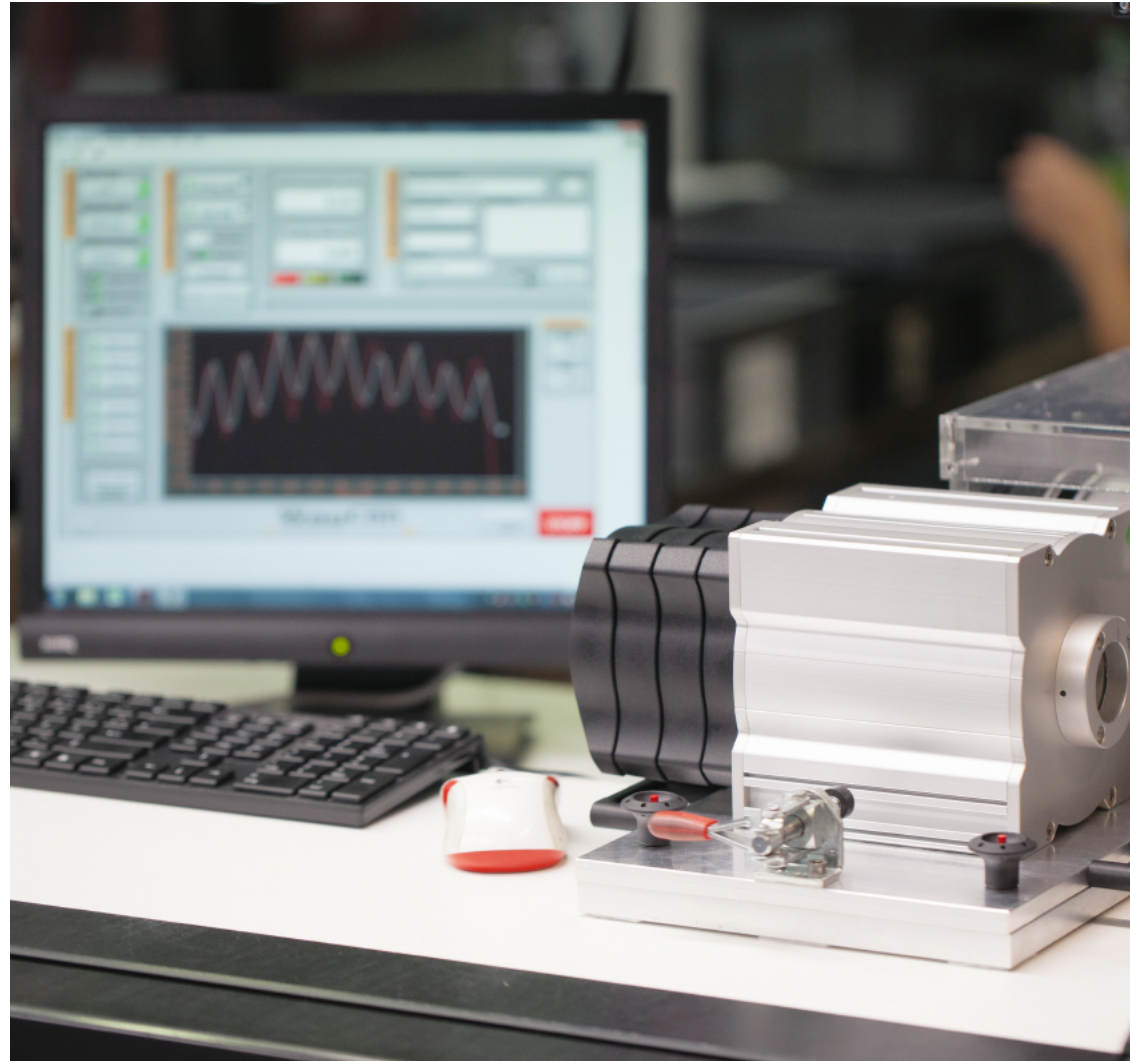




Company Presentation



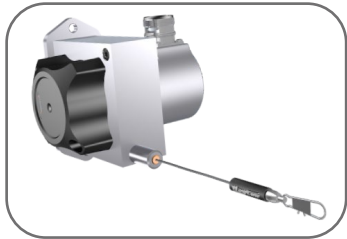
Powerful sensors to meet growing demands

The Company

- ▶ Founded 1999
- ▶ Headquarter in Munich and branch in Cologne
- ▶ Distributors in over 30 countries worldwide
- ▶ Manufacture of sensors for position and distance measurement
- ▶ Product range of premium sensors & custom solutions for industry & research



Product Range



Draw Wire Sensors



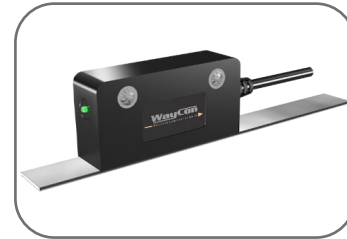
Laser Sensors



LVDT



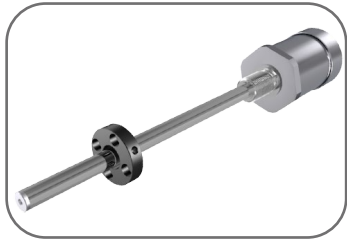
Linear Potentiometers



Magnetic Scales



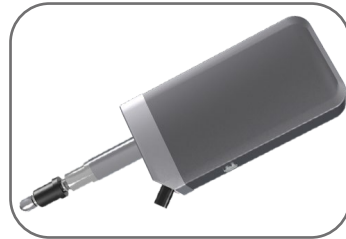
Ultrasonic Sensors



Magnetostrictive Transducers



Non-Contact Inductive Sensors



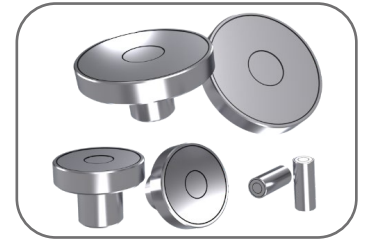
Digital Length Gauges



Encoders



Digital Linear Scales



Capacitive Sensors

Draw Wire Sensors - Key Features

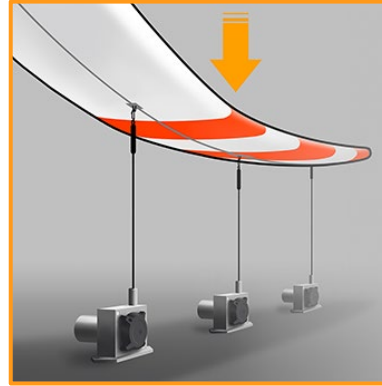
- ▶ Measurement ranges from 50 mm to 50 m
- ▶ Linearity up to $\pm 0.02\%$
- ▶ Resolution up to $17\ \mu\text{m}$
- ▶ Available outputs: potentiometric, analog, digital incremental, digital absolute, tachometer
- ▶ Protection class up to IP67/IP69K
- ▶ Temperature range up to $-40\dots+120\ \text{°C}$
- ▶ Operating pressure up to 300 bar
- ▶ Seawater resistant versions available



Draw Wire Sensors - Application Examples



Stroke Measurement



Wind Turbine



Embankment Dam



Mobile Hydraulics



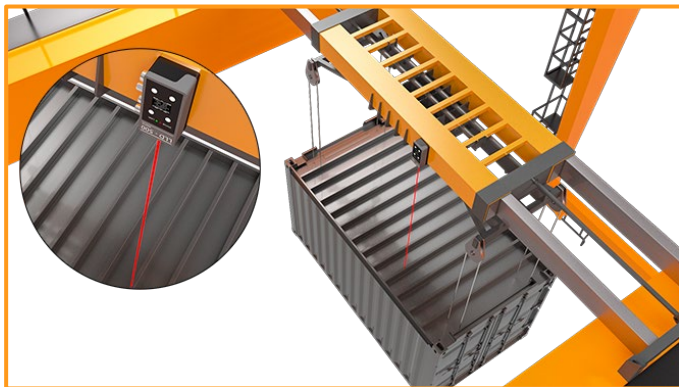
MRI Scanner

Laser Sensors - Key Features

- ▶ Measurement ranges from 0.5 mm to 150 m
- ▶ Linearity up to $\pm 0.1\%$
- ▶ Resolution up to $0.02\ \mu\text{m}$
- ▶ Available outputs: analog, digital incremental, digital absolute
- ▶ Protection class up to IP67
- ▶ Temperature range up to $-40\dots+50\ \text{°C}$



Laser Sensors - Application Examples



Storage Automation



Tolerance Control



Quality Control



Unbalance Measurement

LVDT - Key Features

- ▶ Measurement ranges from 2 mm to 500 mm
- ▶ Linearity up to $\pm 0.1\%$
- ▶ Resolution up to 0.01%
- ▶ Available output: analog
- ▶ Protection class up to IP67
- ▶ Temperature range up to $-40\dots+120\text{ }^{\circ}\text{C}$
- ▶ Operating pressure up to 350 bar



LVDT - Application Examples



Spaceflight



Medical Technology



Agriculture



High Temperature Area

Linear Potentiometer - Key Features

- ▶ Measurement ranges from 10 mm to 2000 mm
- ▶ Linearity up to $\pm 0.05\%$
- ▶ Available outputs: potentiometric, analog
- ▶ Protection class up to IP67
- ▶ Temperature range up to $-30\dots+100\text{ }^{\circ}\text{C}$
- ▶ Operating pressure up to 250 bar



Linear Potentiometer - Application Examples



Automotive



Plastics Industry

Magnetic Scales - Key Features

- ▶ Measurement ranges up to 100 m
- ▶ Linearity up to $\pm 2 \mu\text{m}$
- ▶ Resolution up to $0.5 \mu\text{m}$
- ▶ Available outputs: analog, digital incremental, digital absolute
- ▶ Protection class up to IP68
- ▶ Temperature range up to $-25\dots+85 \text{ }^\circ\text{C}$



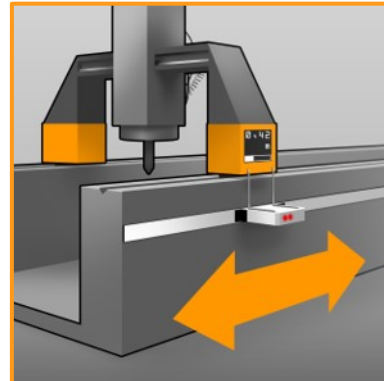
Magnetic Scales - Application Examples



Elevators



Length Measurement



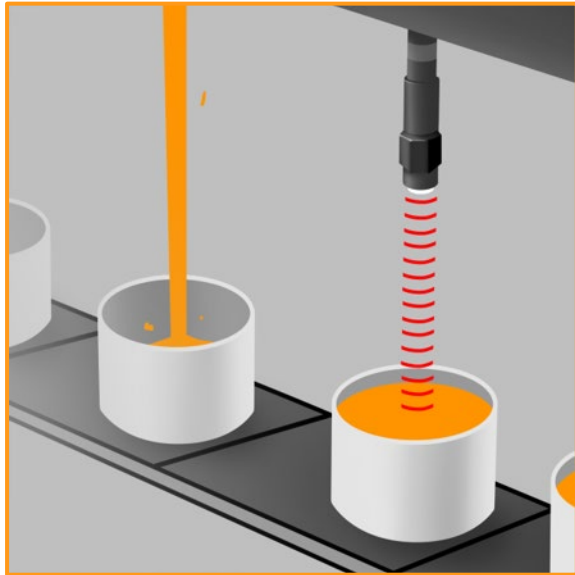
Machine Positioning

Ultrasonic Sensors - Key Features

- ▶ Measurement ranges from 150 mm to 5400 mm
- ▶ Linearity up to $\pm 0.3\%$
- ▶ Resolution up to 0.125 mm
- ▶ Available outputs: analog, control
- ▶ Protection class up to IP67
- ▶ Temperature range up to $-20\dots+70\text{ }^{\circ}\text{C}$
- ▶ ATEX version available



Ultrasonic Sensors - Application Examples



Fluid Level Monitoring



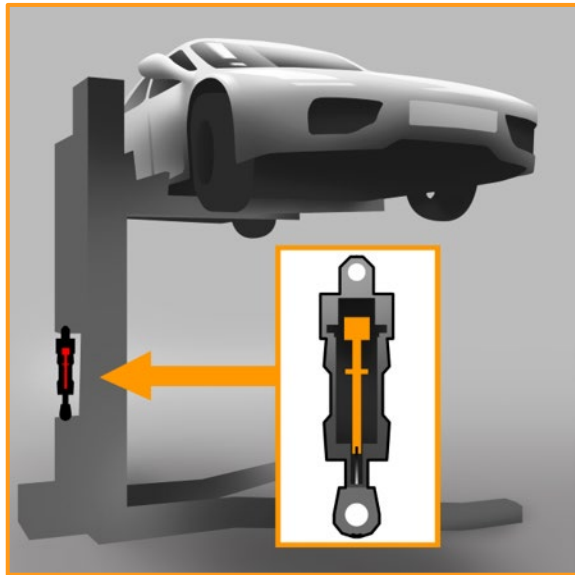
Presence Detection

Magnetostrictive Transducers - Key Features

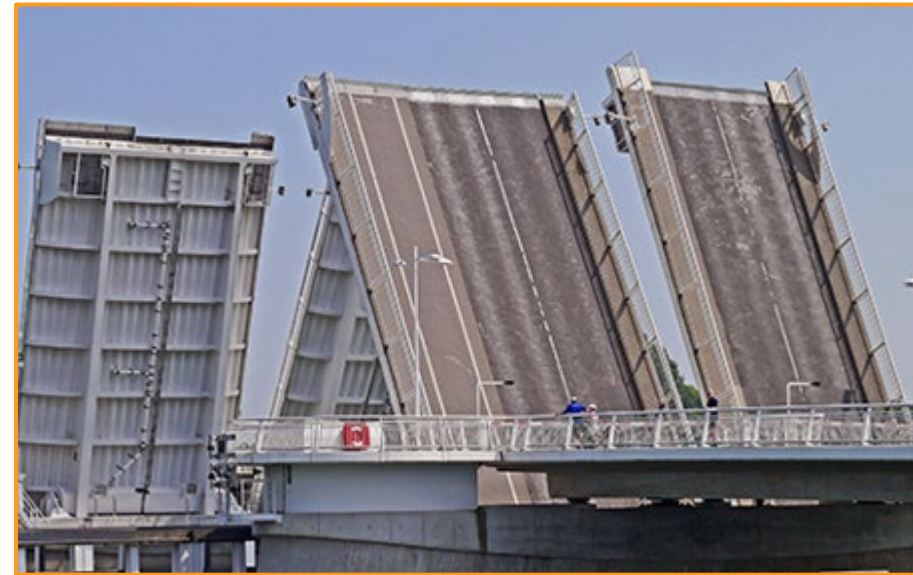
- ▶ Measurement ranges from 50 mm to 4000 mm
- ▶ Linearity up to $\pm 0.01\%$
- ▶ Resolution up to $2\ \mu\text{m}$
- ▶ Available outputs: analog, digital absolute
- ▶ Protection class up to IP67
- ▶ Temperature range up to $-30\dots+90\ \text{°C}$
- ▶ Operating pressure up to 350 bar



Magnetostrictive Transducers - Application Examples



Lifting Platforms



Bascule Bridges

Non-Contact Inductive Sensors - Key Features

- ▶ Measurement ranges from 2 mm to 24 mm
- ▶ Linearity up to ± 0.025 mm
- ▶ Resolution up to $0.005 \mu\text{m}$
- ▶ Available output: analog
- ▶ Protection class up to IP68/IP69K
- ▶ Temperature range up to $-40\dots+70$ °C



Non-Contact Inductive Sensors - Application Examples



Tolerance Control On Oiled Objects



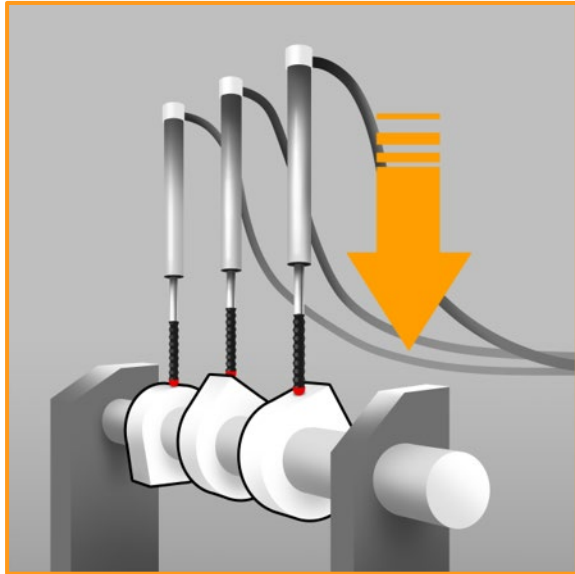
Traffic Safety

Digital Length Gauges - Key Features

- ▶ Measurement ranges from 12 mm to 30 mm
- ▶ Linearity up to $\pm 0.2 \mu\text{m}$
- ▶ Repeatability up to $0.03 \mu\text{m}$
- ▶ Available output: digital incremental
- ▶ Protection class up to IP67
- ▶ Temperature range up to $+10\dots+40 \text{ }^\circ\text{C}$



Digital Length Gauges - Application Examples



Multipoint Inspection



Precision Engineering

Encoders - Key Features

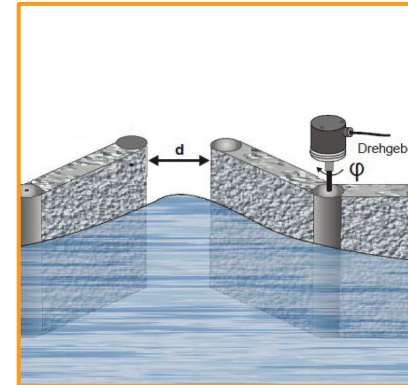
- ▶ Rotational measurement
- ▶ Singelturn or multiturn encoders
- ▶ Solid, blind hollow shaft, hollow shaft
- ▶ Available outputs: potentiometric, analog, digital incremental, digital absolute
- ▶ Protection class up to IP67
- ▶ Temperature range up to -40...+120 °C
- ▶ Ex 2/22 and seawater resistant versions available



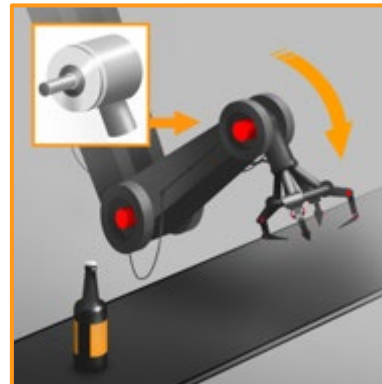
Encoders - Application Examples



Wind Farms



Sluice Gates



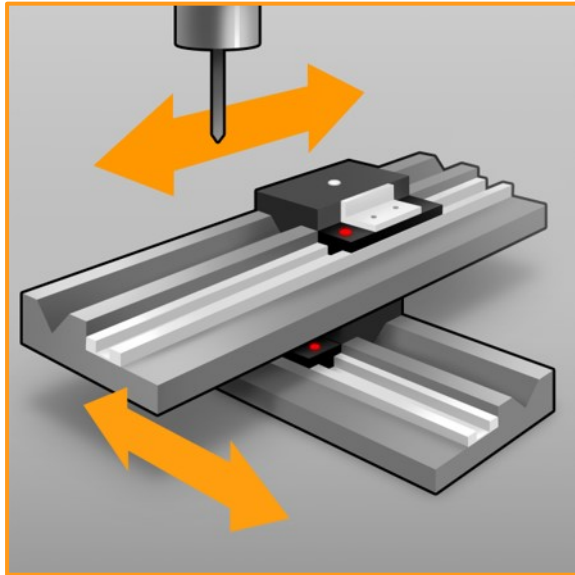
Robotic

Digital Linear Scales - Key Features

- ▶ Measurement ranges from 140 mm to 3040 mm
- ▶ Linearity up to $\pm 3 \mu\text{m}$
- ▶ Resolution up to $10 \mu\text{m}$
- ▶ Available output: digital incremental
- ▶ Protection class up to IP65
- ▶ Temperature range up to $-20\dots+80 \text{ }^\circ\text{C}$



Digital Linear Scales - Application Examples



Two-Dimensional Measurement



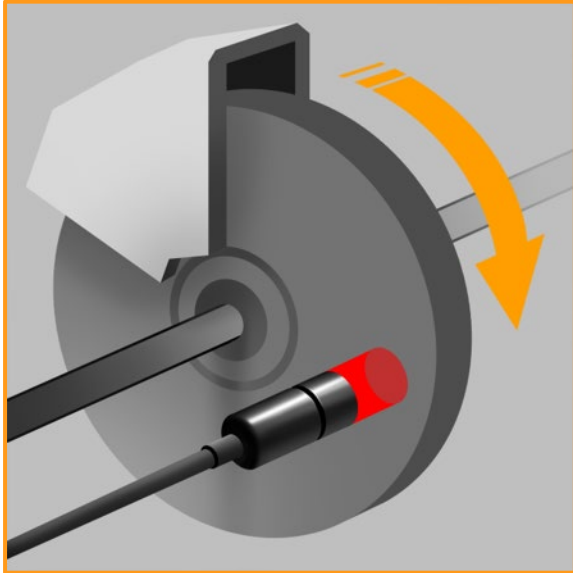
Wood Industry

Capacitive Sensors - Key Features

- ▶ Measurement ranges from 0.05 mm to 10 mm
- ▶ Linearity up to $\pm 0.2\%$
- ▶ Resolution up to 0.01 %
- ▶ Available output: analog
- ▶ Protection class up to IP68
- ▶ Temperature range -50...+200 °C
- ▶ High temperature versions up to +450 °C available



Capacitive Sensors - Application Examples



Concentricity Measurement
During Operation



Filling Inspection

Contact

Headquarters Munich

Mehlbeerenstr. 4
82024 Taufkirchen
Germany

Phone: +49 89 679713 0

Fax: +49 89 679713 250

Branch Office Cologne

Auf der Pehle 1
50321 Brühl
Germany

Phone: +49 2232 5679 44

Fax: +49 2232 5679 45

Email: info@waycon.de

Web: www.waycon.biz