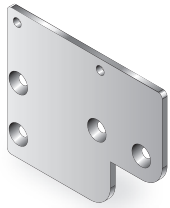


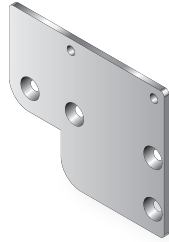
Sensor Accessories

Sensor Mounting Brackets (assembly includes mounting screws)

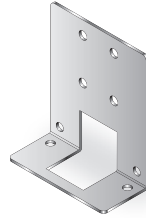
NOTE: All black mounting brackets are aluminum.



XMB-1L
SMARTEYE® X-MARK
Mounting Bracket



XMB-1R
SMARTEYE® X-MARK
Mounting Bracket



XMB-2
SMARTEYE® X-MARK
Mounting Bracket



MIB-1
MINI-EYE™
Stainless Bracket
Assembly



MIB-2
MINI-EYE™
Stainless Bracket
Assembly



MIB-3
MINI-EYE™
Standard
Mounting Bracket



MIB-4
MINI-EYE™
18mm
Mounting Bracket



SEB-4
Stealth-UV,
RetroSmart, X-MARK,
and COLORWISE
Stainless Mounting
Bracket Assembly



SEB-3
Opti-Eye, Mark III,
SMARTEYE® Pro
Series, Stainless
Bracket
Assembly



DRB-1
SMARTEYE® Mark III
Din Rail Bracket



SEB-1
SMARTEYE® Series
Stainless Mounting
Bracket Assembly



MB-18
18mm Bracket,
for use with TA-18



NUT-18
18mm Mounting Nut
for use with
MINI-EYE™



DCB-1
HSL-12 Mounting
Stainless Bracket
Assembly



MEB-1
Mity-Eye
Mounting Bracket
Assembly



TEB-1
Tiny-Eye
Vertical Mount,
Mounting Bracket
Assembly



EEB-2 - EZ-Eye
TEB-2 - Tiny-Eye
Horizontal Mount,
Mounting Bracket
Assembly



EEB-1
EZ-Eye
Vertical Mount,
Mounting Bracket
Assembly



UMB-1
U.S. Eye
Mounting Bracket
Assembly



USB-1
U.S. Eye
Adjustable
Sub-Bracket Assembly

5 Accessories



PLCs



Acquisition



Instruments



Data logger



Power



HMI



Switches



Motion



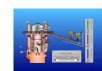
Sensors



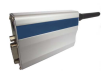
Converters



Keyboards



SCADA



Telemetry