

CHAMPTEK[®]

We value your ID's

SCANTECH ID[®]



***Leading Auto-ID
Total Solution Provider***

Brand Story

Champtek was founded in 1985 with specialized in AIDC industry. We are a leading total solution provider and manufacturer of auto-ID devices in Taiwan.

Besides the big success in marketing with CHAMPTEK brand, Champtek acquired Scantech ID, the Netherlands-based top 5 omni-directional scanner manufacturer in 2006, and strives to the global marketing with dual brand of CHAMPTEK and SCANTECH ID.

CHAMPTEK and SCANTECH ID nowadays provide a broad variety of AIDC solution including scan kiosks, price checkers, barcode scanners, NFC and RFID, and magnetic card readers from high C/P value combination to industrial grade segment.

The 'V' in the CHAMPTEK

The red V in the middle of CHAMPTEK stands for VALUE, which represents we respect customers' value from heart. We commit, we dedicate our value. We, value your ID's!



Product Portfolio

Champtek currently operates under two brand names, "CHAMPTEK" and "SCANTECH ID", and provides the total solution to the variety of customers' needs.

You will find specific brands (CHAMPTEK / SCANTECH ID) on the right hand corner on top of the page for branding category under each product section.

Fixed Mount Scanners

IP65 700 fixed mount series



Contact to middle range Scanners

380 Series / SD700 / SD320 / SD120



Gun Type Scanners

600 / 700 / 800 wired and wireless series



Mag. Stripe, Slot and Wand Readers

MR300 / BR300 / WD200



Pocket Scanners

MB200x / MB300x



NFC/RFID Solutions

NFC Reader and modules



Scanner Modules

MCR14 / MCR14S / MIR3+ / MIR4



CHAMPTEK[®]
We value your ID's

Scan Kiosks / Price Checkers

SK-100 / SK-50 / SK-40 / SG-15C



Desktop Scanners

AQUILA A-8050 / NOVA N-4080i / LIBRA L-7080i / MICA M-9080i



SCANTECH ID[®]

- Multifunction scan kiosk for diversified application in self-service, ID identification, information & multimedia service and digital signage
- 10.1" LCD with capacitive multitouch screen
- Powered by Linux or Android

- Best value scan kiosk for self-service, interactive service, information & multimedia service, and ID identification applications in retail, transportation, medical care, hospitality and office building
- 5.7" touch screen / 4.3" color display
- Patented adjustable scanner head design
- Powered by Linux or WinCE OS

- Best value price checker to increase productivity and efficiency in retail shops
- 3.5" color display
- Remote package upgrade
- WIFI connectivity (optional)



System Architecture

	SK-100		SK-50	SK-40	SG-15 Colour
Operating Platform	Linux 3.4	Android	Linux 2.6 or WinCE 6.0		Linux 3.4
Storage	8GB internal storage, with external USB and micro SD card ports External: USB flash drive and SD card (not included)		256MB internal storage, with external USB and SD card ports External: USB flash drive and SD card (not included)		4GB internal storage
Memory RAM	1G		128MB		512MB
Power	DC 12V±10% / 2A / 24W or POE (optional)		DC 12V±10% / 1.5A / 18W or POE (optional)		DC 5V / 2.0A power adapter or POE (optional)
Dimensions	238 x 253 x 72mm		193 x 176 x 85mm		182 x 131 x 95mm

Output Media

Display Size	10.1" (diagonal)	5.7" (diagonal)	4.3" (diagonal)	3.5" (diagonal)
Brightness	450 nits	400 nits	350 nits	450 nits
Resolution	1280 x 3(RGB) x 800 pixels (16M colors)	640 x 480 pixels (65K colors)	480 x 272 pixels (65K colors)	320 x 240 pixels (16M colors)
Touch Screen	Capacitive type	Resistive type	N/A	N/A
Image Format	PNG, JPEG, GIF, BMP			PNG, JPEG, GIF, BMP
Audio Format	WAV, WMA, MP3			WAV
Video Format	MPEG-4, H.264			N/A
Audio Ports	High Definition Stereo (16-bit PCM 44.1 KHz)			N/A
Speakers	High Quality loudspeakers for superior audio performance			Speaker
Earphone Jack	N/A	3.5 mm standard jack		N/A

Data Ports

	Micro SD card x 1, USB x 4, RS232 x1, LAN port x 1, Power over Ethernet (optional) Exit Gate and Door Lock control (optional)	SD card x 1, USB x 4, RS232 x1, LAN port x 1, Power over Ethernet (optional) Exit Gate and Door Lock control (optional)	USB x 1, RS232 x 1, LAN x 1 Power over Ethernet (optional)
--	--	--	---

Network Interface

Wired LAN	10/100Mb Ethernet (802.3)		
Wireless LAN	802.11 b/g/n/ac, 2.4GHz and 5GHz dual band (optional)	IEEE 802.11 a/b/g/n/ac Dual-band 2.4GHz or 5GHz (optional)	802.11a/b/g/n/ac, 2.4GHz and 5GHz dual-band (optional)
Encryption protocols	WPA, PSK and WPA Enterprise security		WPA, WPA-1/2 Personal & Enterprise

Data Inputs

Scanner Type	2D imager	1D omni-directional laser, 2D imager (selectable)	1D omni-directional laser, 1D Linear imager, 2D area imager (selectable)
Scanner Coverage	Ergonomical Scan Angle Coverage	Adjustable from 10° to 45° vertical in 5° step lock	
Optional	NFC Reader (ISO 1443A / ISO 1443B / ISO 15693 / MIFARE Classic / MIFARE Ultralight)		N/A

Software and Applications

Remote Management Tool	Remote package upgrade, Synchronizing group units, Web Configuration, Promotion tool		Price check application, web configuration & management tool, web price checker, remote package upgrade	Price check application, web management, remote package upgrade, Web PriceChecker
	Price Checker Web Price Checker PromoTool	Local Price Checker and Web Price Checker DEMO and Sample code		

Gun-type Scanners

General Purpose Gun-type Scanner



- General use for every environment and application in retail, production, logistics, warehouse
- High quality and high C/P value
- 3-in-1 combo interface with quick swap interface cable
- Bluetooth v2.1, supports HID and SPP profile
- Up to 100m transmission range (in open space)

Specification	SG600/BT	LG610/BT	IG610/BT	IG620/BT
Light Source	632±5nm Red LED	650±10nm VLD	625±5nm Red LED	
Depth of Field	Up to 500mm@20mil/0.5mm, PCS90%, Code 39	Up to 300mm@20mil/0.5mm, PCS90%, Code 39	Up to 500mm@20mil/0.5mm, PCS90%, Code 39	Up to 300mm@20mil/0.5mm, PCS90%, Code 39
Field of View	Horizontal: 45°		Horizontal: 40°, Vertical: 25°	
Scan Rate (per second)	Smart detection, up to 500 scans	50 scans ±5%	60 images	
Resolution	4mil/ 0.1mm	5mil/0.127mm	1D: 4mil/0.1mm 2D: 5mil/0.127mm	1D: 4mil/0.1mm 2D: 10mil/0.26mm
Print Contrast Ratio	25%			30%
Indicator	Beeper and LED			
Ambient Light	Up to 100,000 Lux	Up to 5,000 Lux	Up to 100,000 Lux	
Interface	RS232, USB (HID, Virtual COM)			
Dimensions	169.2x71.1x62.6mm			
Power	DC 5V			
Sealing protection	IP42			
Drop Resistance	1.5m (wired model)		1.2m (wireless model)	

Wireless Characteristics

Wireless Standard	Bluetooth V2.1, HID and SPP profile supported	
Battery	Lithium-ion Battery (3.7V, 2600mAh)	
Charge Time	Approx. 5 hours	
Scan Per Charge	50,000 times (continuous read)	20,000 times (continuous read)
Radio Transmission Range	Class 1, up to 100m (in open space)	

Symbologies



Handheld Linear Imager Scanners

- Best C/P value barcode scanner with reliable quality and performance
- 1D barcode reading, up to 3mil resolution
- Lightweight and compact design for comfortable handheld
- 4-in-1 combo interface with quick swap interface cable



Specification	SD120	SD320	SD700	SD380
Light Source	632±5nm Red LED			
Depth of Field	Contact to 60mm@20mil/0.5mm, PCS90%, Code39	Contact to 50mm@20mil/0.5mm, PCS90%, Code39	Contact to 80mm@20mil/0.5mm, PCS90%, Code39	Contact to 200mm@20mil/0.5mm, PCS90%, Code 39
Width of Field	80mm (60mm at window)	90mm (80mm at window)	90mm (80mm at window)	90mm (40mm at window)
Scan Rate(per second)	120 scans±10%		200 scans±10%	100 scans±10%
Resolution	4mil/0.1mm		3mil/0.076mm	4mil/0.1mm
Print contrast ratio	25%			
Dimensions	166.4 x 78 x 77.8mm	173.5 x 90 x 56.2mm	171.3 x 82.8 x 75mm	168 x 65 x 54.9mm
Indicator	Beeper	Beeper and LED		Beeper
Ambient light	Up to 5,000 Lux Max		Up to 20,000 Lux Max	Up to 10,000 Lux Max
Interface	RS232, USB(HID,Virtual COM),KBW			
Power	DC 5V ±5%			
Drop resistance	1.2m			1.5m

Symbologies



General Purpose Gun-type Scanner



- General use for every environment and application in retail, production, logistics, warehouse
- Ergonomic and trendy design
- Ruggedized design with IP42 protection
- 3-in-1 combo interface with quick swap interface cable
- Bluetooth v2.1, supports HID and SPP profile
- Up to 100m transmission range (in open space)

Specification	SG800/BT	IG820/BT
Light Source	632±5nm Red LED	625±5nm Red LED
Depth of Field	Up to 600mm@20mil/0.5mm, PCS90%, Code 39	Up to 300mm@20mil/0.5mm, PCS90%, Code 39
Field of View	Horizontal: 45°	Horizontal: 40°, Vertical: 25°
Scan Rate (per second)	Smart detection, up to 500 scans	60 images
Resolution	4mil/0.1mm	1D: 4mil/0.1mm 2D: 10mil/0.26mm
Print Contrast Ratio	25%	30%
Indicator	Beeper and LED	
Ambient Light	Up to 100,000 Lux	
Interface	RS232, USB (HID, Virtual COM)	
Dimensions	192x78x72mm	
Power	DC 5V±5%	
Sealing protection	IP42	
Drop Resistance	1.8m (wired model) 1.5m (wireless model)	

Wireless Characteristics

Wireless Standard	Bluetooth V2.1, HID and SPP profile supported	
Battery type	Lithium-ion Battery (3.7V, 2600mAh)	
Charge Time	Approx. 5 hours	
Scan Per Charge	50,000 times (continuous read)	20,000 times (continuous read)
Radio Transmission Range	Class 1, up to 100m (in open space)	

Symbologies



Specification	IG380
Light Source	625±5nm Red LED
Depth of Field	Up to 200mm@20mil/0.5mm, PCS90%, Code 39
Field of View	Horizontal: 40°, Vertical: 25°
Scan Rate (per second)	60 images
Resolution	1D: 4mil/0.1mm 2D: 10mil/0.26mm
Print Contrast Ratio	30%
Indicator	Beeper
Ambient Light	Up to 100,000 Lux
Interface	RS232, USB (HID, Virtual COM)
Dimensions	168x65x54.9mm
Power	DC 5V±5%
Drop Resistance	1.5m (wired model)

Symbologies



IP protection Sealed Gun-type Scanner



- General use for every environment and application in retail, production, logistics, warehouse
- Ruggedized design with IP54/IP42 protection
- 4-in-1 combo interface with quick swap interface cable
- Bluetooth v2.1, supports HID and SPP profile
- Up to 100m transmission range (in open space)

Specification	SG700/BT	IG710/BT	IG720	LG710/BT
Light Source	632±5nm Red LED	625±5nm Red LED	625±5nm Red LED	650±10nm VLD
Depth of Field	Up to 500mm@20mil/0.5mm, PCS90%, Code 39	Up to 500mm@20mil/0.5mm, PCS90%, Code 39	Up to 250mm@20mil/0.5mm, PCS90%, Code39	Up to 300mm@20mil/0.5mm, PCS90%, Code 39
Field of View	Horizontal: 45°	Horizontal: 40°, Vertical: 25°	Horizontal: 40°, Vertical: 25°	Horizontal: 45°
Scan Rate (per second)	Smart detection, up to 500 scans	60 images	60 images	50 scans ±5%
Resolution	4mil/0.1mm	1D: 4mil/0.1mm 2D: 5mil/0.127mm	1D: 4mil/0.1mm 2D: 10mil/0.26mm	5mil/0.127mm
Print Contrast Ratio	25%		30%	25%
Indicator	Beeper and LED			
Ambient Light	Up to 100,000 Lux			Up to 5,000 Lux
Interface	RS232, USB (HID, Virtual COM), KBW		RS232, USB (HID, Virtual COM)	RS232, USB (HID, Virtual COM), KBW
Dimensions	177.9 x 75 x 71.3mm			
Power	DC 5V ±5%			
Sealing Protection	IP54 (wired model), IP42 (wireless model)			
Drop Resistance	1.8m (wired model) 1.5m (wireless model)			1.5m (wired model) 1.2m (wireless model)

Wireless Characteristics

Wireless Standard	Bluetooth V2.1, HID and SPP profile supported		
Battery	Lithium-ion Battery (3.7V, 2600mAh)		
Recharge Time	Approx. 5 hours		
Scan Per Charge	50,000 times (continuous read)	20,000 times (continuous read)	50,000 times (continuous read)
Radio Transmission Range	Class 1, up to 100m (in open space)		

Symbologies



- Ideally suited for high-volume scanning in retail, transportation and production
- FS700(1D Linear Imager), FI710(2D Area Imager), FS310(1D Linear Imager), FI310(2D Area Imager), FI320(2D Area Imager)



Specification	FS700	FI710
Light Source	632±5nm Red LED	625±5nm Red LED
Depth of Field	Up to 500mm@20mil/0.5mm, PCS90%, Code 39	Up to 500mm@20mil/0.5mm, PCS90%, Code 39
Scan Rate (per second)	Smart detection, up to 500 scans	60 images
Resolution	0.1mm/4mil	1D: 4mil/0.1mm 2D: 8mil/0.2mm
Print contrast ratio	25%	
Indicator	Beeper and LED	
Interface	RS-232, USB (HID, Virtual COM)	
Ambient Light	Up to 100,000 Lux	
Sealing Protection	IP65	
Dimensions	64.6x59.2x30mm	
Power	DC 5V ±5%	

Symbologies



Specification	FS310	FI310	FI320
Light Source	632±5nm Red LED	625±5nm Red LED	
Depth of Field	Up to 500mm@20mil/0.5mm, PCS90%, Code 39		Up to 300mm@20mil/0.5mm, PCS90%, Code 39
Scan Rate (per second)	Smart detection, up to 500 scans	60 images	60 images
Resolution	0.1mm/4mil	1D: 4mil/0.1mm 2D: 8mil/0.2mm	1D: 4mil/0.1mm 2D: 10mil/0.26mm
Print contrast ratio	25%		30%
Indicator	Beeper		
Interface	RS-232, USB (HID, Virtual COM)		
Ambient Light	Up to 100,000 Lux		
Dimensions	69x56x27.7mm		
Power	DC 5V ±5%		

Symbologies



Small Footprint Presentation Scanner

- Scanner head can be forward and backward adjusted in a total 102° range to accommodate to your application need
- With the most compact footprint can fit in the most space constrained areas
- Support wall-mount hanging installation
- Built-in EAS antenna for simultaneously barcode scanning and EAS tag deactivation

- Exclusive STAR code reconstruction technology to enhance reading speed and accuracy to truncated, damaged and substandard barcodes



- High volume hands-free scanning to increase efficiency in retail stores
- High accuracy in reading of 1D and 2D codes printed or on mobile Devices



- Read the most common 1D, 2D, composite and stacked codes, reduce your investment cost
- Boost customer services with good ability to scan virtually mobile bar code on various types of display



Specification	LIBRA L-7050	LIBRA L-7080i	LIBRA L-7082i
Light Source	650±10nm VLD	625± 10nm Red LED	625± 5nm Red LED
Depth of Field	Up to 230mm@13mil/0.33mm, PCS90%, Code 39	Up to 230mm@13 mil/0.33mm, PCS90%, Code 39	Depth of Field: Up to 210mm@20 mil/0.5mm, PCS90%, Code 39
Scan Pattern	6 directions scan field, 24 lines scan pattern	Horizontal: 40°, Vertical: 25°	Horizontal: 40°, Vertical: 25°
Scan Rate (per second)	2,000 scans ± 5%	60 images	60 images
Resolution	5mil/0.127mm	1D: 4mil/0.1mm, 2D: 8mil/0.2mm	Resolution: 1D: 4mil/0.1mm, 2D: 10mil/0.25mm
EAS	Yes		
Sealing Protection	IP42		
Print Contrast Ratio	25%		30%
Indicator	Beeper and LED		
Ambient Light	Up to 4,800 Lux	Up to 100,000 Lux	
Interface	RS232, USB(HID, Virtual COM), KBW, Power USB (option)	RS232, USB(HID, Virtual COM)	
Dimensions	161.5x97.7x94xmm		
Power	DC 5V ±5%		

Symbologies



- Advanced scan pattern design with 20 scanning line for high volume hands-free barcode reading
- Built-in EAS antenna for simultaneously barcode scanning and EAS tag deactivation
- Maximized life time and optimized power consumption by intelligent sleep and wake-up auto-sensing technology
- IP42 environmental sealing protection



Specification	AQUILA A-8050
Light Source	650±10nm VLD
Depth of Field	Up to 240mm@13mil/0.33mm, PCS 90, Code 39
Scan Pattern	5 directions scan field, 20 lines scan pattern, single line option
Scan Rate (per second)	1,350 scans
Resolution	4mil/0.1mm
EAS	YES
Sealing Protection	IP42
Print Contrast Ratio	25%
Indicator	Speaker & LED
Ambient Light	Up to 4,800 Lux
Interface	RS232, USB(HID, Virtual COM)
Dimensions	164x116x84mm
Power	DC 5V±5%@2A

Symbologies



- Designed for high volume hands-free scanning
- Maximized life time and optimized power consumption by intelligent sleep and wake-up auto-sensing technology
- Optional stands and adjustable scanner angle fits in all mounting scenarios



- High accuracy in reading of 1D and 2D codes printed or on mobile devices
- Optimized design for hands-free barcode scanning in built-in and OEM applications
- Compact size fits to on desk or wall-mounted installation



Specification

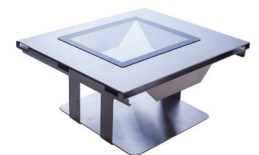
	MICA M-9030 with Stand	MICA M-9080i with Stand
Light Source	650±10nm VLD	625±10nm VLD
Depth of Field	Up to 230mm@13mil/0.33mm, PCS90%, Code 39	Up to 230mm@13mil/0.33mm, PCS90%, Code 39
Scan Pattern	6 directions scan field, 24 lines scan pattern	Horizontal: 40°, Vertical: 25°
Scan Rate (per second)	2,000 scans ± 5%	60 images
Resolution	5mil/0.127mm	1D: 4mil/0.1mm, 2D: 8mil/0.2mm
Print Contrast Ratio	25%	
Indicator	Beeper and LED	
Ambient Light	Up to 4,800 Lux	Up to 100,000 Lux
Interface	RS232, USB(HID, Virtual COM), KBW, Power USB (option)	RS232, USB(HID, Virtual COM)
Dimensions	67x62x46mm (body only)	
Power	DC 5V ±5%	

Symbologies



Omni-directional Laser Counter Scanner

- Desktop scanner suited for desktop, wall-mounted, on-counter or in-counter installation
- Exclusive STAR code reconstruction technology to enhance reading speed and accuracy on truncated, damaged and substandard barcodes
- Advanced omni-directional scan pattern to enhance reading accuracy
- Maximized life time and optimized power consumption by auto-sensing technology for sleep and wake-up
- Touch control sensors for volume adjustment
- Built-in EAS antenna for simultaneously barcode scanning and EAS tag deactivation



- In-counter metal frame for NOVA Series



Specification

	NOVA N-4060	NOVA N-4070	NOVA N-4080i	PAVO P-3080i
Light Source	650±10nm VLD		625±10nm Red LED	
Depth of Field	Up to 250mm@13mil/0.33mm, PCS90%, Code 39		Up to 300mm@20mil/0.5mm, PCS90%, Code 39	
Scan Pattern	7 directions scan field, 24 lines	7 directions scan field, 30 lines	Horizontal: 40°, Vertical: 25°	
Resolution	5mil/0.127mm		1D: 4mil/0.1mm, 2D: 8mil/0.2mm	
Indicator	Speaker & LED		Speaker & LED	
Print Contrast Ratio	25%		25%	
Interface	RS232, USB (HID or Virtual COM), KBW, Power USB		RS232, USB (Virtual COM)	
Dimensions	152x152x90mm		152x152x90mm	152x152x91mm
EAS	YES		YES	
Ambient Light	Up to 6,400 Lux	Up to 7,000 Lux	Up to 100,000 Lux (direct sunlight)	
Input Voltage	DC 12V ±5% @1.5A		DC 5V ±5% @2A	

Symbologies

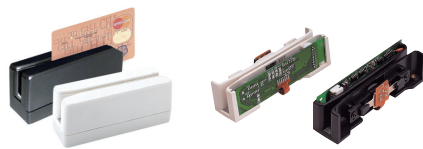


- Perfectly fit for highly mobile users in warehouse, logistics, retail and production
- Bluetooth v2.1 Class 2, HID and SPP mode supported
- 2D area imager, 1D linear imager or 1D laser scanner (selectable)
- Over 10,000 times scan battery life
- Robust design with 1.5m drop resistance and IP54 sealing protection
- High contrast rate 0.96" OLED display (*MB300x series)
- Synchronization app for mobile devices and PC



Specification	MB200	MB300
Storage	8MB (over 100,000 scans of 50 bytes barcode)	
Display	N/A	0.96" OLED (128x64 dots, monochrome)
Indicator	LED x 1, Beeper x 1, Vibrator x1	
Engine	Laser: MB200L, 1D Linear Imager: MB200C, 2D: MB200i Laser: MB300L, 1D Linear Imager: MB300C, 2D: MB300i	
Battery	Lithium-Polymer Battery (3.7V, 500mAh)	
Battery Charging	via Micro USB	
Dimensions	90x41x23.4mm	
Weight	70g	
Available color	Black cover and dark gray bottom cases	
Sealing Protection	IP54	
Drop Resistance	1.5m	

Magnetic / Barcode Slot Readers / Pen Scanners



Specification	MR300/800	MMR
Magnetic Card	ISO 7810-7813 and JISII	
Interface	TTL/KBW/RS232/USB	
Life Cycle	1,000,000 times	
Tracks T1&T2&T3	Decoding Density T1/T2/T3: 210/75/210 BPI Capacity T1/T2/T3: 79/40/107 Characters	
Scan Rate	100-1000mm/sec	



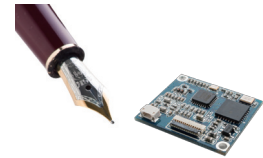
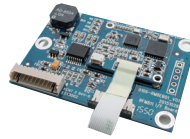
Specification	BR300/800	MBR
Light Source	RED LED/ IR	
Interface	TTL/KBW/RS232/USB	
Resolution	5.9mil/0.15mm	
Readable Barcodes	All UPC/EAN/JAN, EAN128 Code Code 39, Code 128, CODABAR/NW7, Interleave 25	
Scan Rate	100-1000mm/sec	



Specification	WD100	WD200	WD300
Light Source		660nm Red LED	
Sensor		Photo Diode	
Scan Speed		50-500mm/sec	
Depth of Field		Contact Type	
Resolution		5mil/0.127mm	
Ambient Light		Up to 1,500 Lux (direct sunlight)	

NFC Reader Overview

- 13.56MHz radio frequency Near Field Communication (NFC)
- Fully compatible with ISO/IEC 15693, ISO/IEC 18092 Tag, ISO/IEC 14443A/B, MIFARE and FeliCa protocols
- 424 Kbps read/write speed
- Complete command library and software configuration utility for system integration



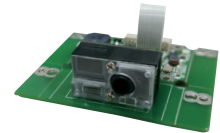
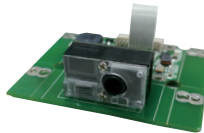
Series	NFC Reader	NFC Kit	NFC Module
Product Configuration	Reader or (Reader and Writer)	NFC Reader without housing (PCBA module + interface board + USB cable)	PCBA module
Model	RFR811	RFK811	RFM811
Standards	UID Reading (ISO/IEC 15693, ISO/IEC 18092 Tag, ISO/IEC 14443A/14443B, MIFARE and FeliCa card)		
Interface	RS232 / USB Virtual COM / USB HID		
Data Format	ASCII code		
Model	RFR811M	RFK811M	RFM811M
Standards	MIFARE UID Reading, Data Reading and Writing		
Interface	RS232 / USB Virtual COM		
Data Format	binary data		
Read/Write Command	APDU		
Model	RFR811i	RFK811i	RFM811i
Standards	ISO15693 UID Reading, Data Reading and Writing		
Interface	RS232 / USB Virtual COM		
Data Format	binary data		
Read/Write Command	APDU		
Dimensions	90x90x17mm	50x35x4.5mm	23.5x20x3mm
Power	DC 5V ±5%		
Indicator	2 color LED and Beeper		
Antenna	Built-in antenna (reading distance up to 50mm)	Antenna included (reading distance up to 50mm)	optional
Mounting Kit	Optional mounting bracket for desktop or wall mounting	N/A	

- Compact size design for built-in or OEM product applications



Specification	MCR14	MCR14S
Light Source	632±5nm Red LED	
Depth of Field	Up to 500mm@20mil/0.5mm, PCS90%, Code 39	Up to 250mm@20mil/0.5mm, PCS90%, Code 39
Scan Rate (per second)	Smart detection, up to 500 scans	100 scans ±10%
Field of View	Horizontal: 45°	
Resolution	4mil/0.1mm	
Print Contrast Ratio	25%	
Indicator	Beeper	
Interface	Module only: UART/USB (HID, Virtual COM) Module with interface board: RS232/USB/KBW	Module only: UART/USB (HID, Virtual COM) Module with interface board: RS232/USB/KBW
Dimensions	25x20x11.5mm	
Power	DC 5V±5%	

Symbologies



Specification	MIR3+	MIR4D	MIR4W
Light Source	625±5nm Red LED	White LED	
Depth of Field	Up to 250mm@20mil/0.5mm, PCS90%, Code 39	Up to 300mm@20mil/0.5mm, PCS90%, Code 39	Up to 250mm@20mil/0.5mm, PCS90%, Code 39
Scan Rate (per second)	60 images		
Field of View	Horizontal: 40°, Vertical: 25°	Horizontal: 39°, Vertical: 25°	Horizontal: 52°, Vertical: 33°
Resolution	1D: 4mil/0.1mm 2D: 10mil/0.26mm	1D: 5mil/0.127mm 2D: 20mil/0.5mm	
Print Contrast Ratio	30%		
Indicator	Beeper		
Interface	RS232, USB (HID, Virtual COM)		
Dimensions	53mm W x 40.9mm D x 21.4mm H (wide board with two mounting area) 36mm W x 40.9mm D x 21.4mm H (narrow board with one mounting area) 30.2mm W x 16.9mm D x 18.5mm H (imager size with sensor board)	A1: 53.00mm W x 40.90mm D x 15.20 mm H (Wide board with three mounting areas and connected by molex cable. The engine is mounted on the board.) A2: 36.00 mm W x 40.90 mm D x 15.20 mm H (Wide board with one mounting area and connected by molex cable. The engine is mounted on the board.) A3: 36.00 mm W x 40.90 mm D x 12.00 mm H (Narrow board with one mounting area and connected by molex cable. The engine is separated.) D: 38.85 mm W x 23.50 mm x 5.20 mm H (Narrow board with one mounting area and connected by FPC. The engine is separated.)	
Power	DC 5V±5%		

Symbologies



Contact Info.

Taiwan

5F, No.2, Alley 2, Shih-Wei Lane, Chung-Cheng Rd.,
Xindian Dist., New Taipei City 231, Taiwan
Tel:+886-2-2219-2385
Fax:+886-2-2219-2387
E-mail: sales@champtek.com
E-mail: marketing@champtek.com

China

Room 2322, No.168, Yude Rd.,
Xuhui District, Shanghai, China
Tel:+86-21-5489-0021
Fax:+86-21-5489-1833
E-mail: sales@champtek.com

Europe

Scantech-ID BV
Heliumweg 34a
3812 RE Amersfoort
The Netherlands
Tel:+31 (0)33 4698 400
Fax:+31 (0)33 4650 615
E-mail: sales@champtek.com

USA

243 Winthrop Ave. Westbury, NY 11590, USA
Tel:+1-(516)876-9221
Fax:+1-(516)876-9237
E-mail: teresa@champscan.com

www.champtek.com

