



# MANUFACTURING and INDUSTRY 4.0

Real-Time Location Systems (RTLS)



**Litum**

## Forklift Collision Warning



[CLICK HERE](#)  
to find out more

Enhance forklift operation safety with 360-degree awareness. Automatically adjust forklift to slow down without a need for driver intervention.



Audiovisual alerts for people in close proximity



Automatic slow down when too close to other lifting equipment and people



Offline operation without infrastructure requirement, directly powered by the forklift battery

### IFF

US-based International Flavors Fragrances (IFF) has boosted worker safety and visibility for emergency response by deploying a wireless intelligence solution by Litum.

## Emergency Evacuation Automated Roll Call



[CLICK HERE](#)  
to find out more

Get precise headcount and instant information on missing people in emergency situations.



Electronic badge that enables long-range coverage



Standalone system that works on cell phones and tablets



Compliance with safety regulations

### FERRERO

With Litum's solution, it takes Ferrero 70% less time to find out if employees are safely evacuated, or who needs to be located in emergency situations.

## Lone Worker Safety



[CLICK HERE](#)  
to find out more

Receive swift responses to life-threatening situations, and effectively enforce safety rules with instant alerts.



Employee monitoring in high-risk environments to detect accidents or falls, collisions, and/or prolonged inactivity



Controlled access to sensitive areas, and alerts for unauthorized entries and exits

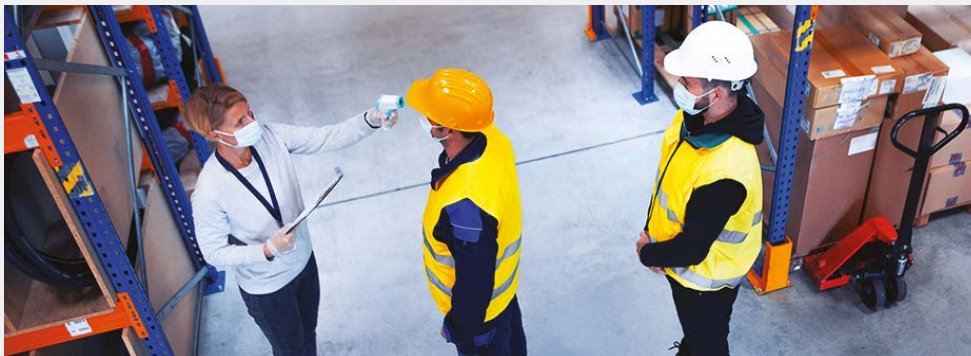


Extensive safety measures with panic buttons to instantly reach employees under duress

### Metro Paris

Litum helped make the Grand Paris Express construction safer. Paris Metro tracked the security of thousands of construction workers in tunnels as it expanded its underground rail line, all through Litum's RTLS technology.

## Pandemic Safety



[CLICK HERE](#)  
to find out more

Provide a safer work environment for your employees. Initiate proactive and responsive safety measures to minimize pandemic risks.



Alerts to keep employees safe based on safe distance rules defined by the business



Congregation alerts to prevent gatherings



Contact tracing report going back to 14 days to support public health and safety officials



Prioritized clean-up routines for areas where an employee with a positive test result came into contact with

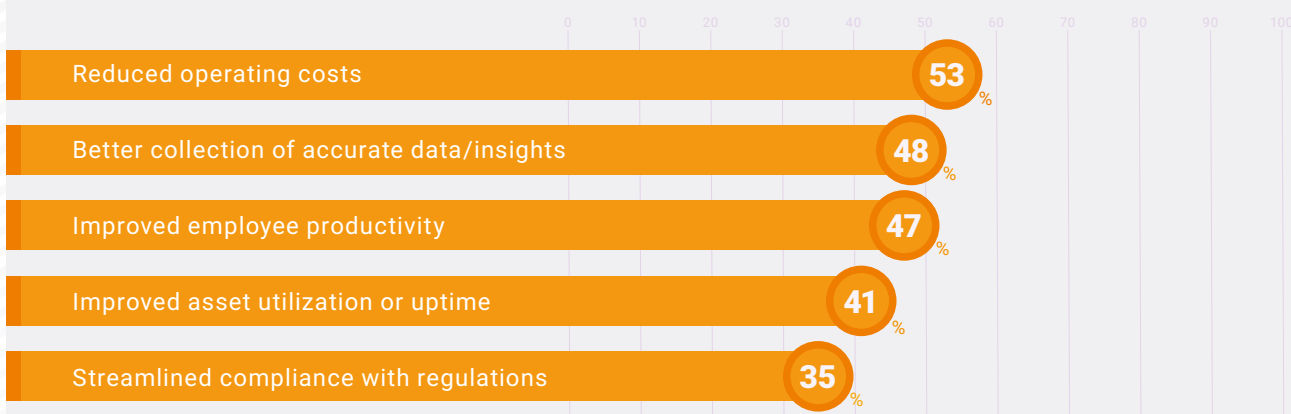
### Pandemic Safety Solution for a World-Leading Financial Institution

Litum helped a key financial institution bring 55,000 employees back to the workplace following COVID-19 pandemic, assuring their commitment to employee safety while investing in a solution that provides faster response and higher flexibility in similar cases.

# Efficiency Solutions

Time is of the essence, and operational efficiency saves time, boosting profitability. Track your operations for informed decisions, better oversight, and higher productivity.

Some of the benefits IoT adopters are reporting.\*



\*Vodafone Business – IoT Barometer (2021)



## Forklift Tracking



**CLICK HERE**  
to find out more

Maximize forklift utilization and prevent additional fleet costs.



Improved workflow through intelligence on user operation, forklift hours, vehicle movement, and work order completion



Optimized fleet size based on usage analysis and trends to avoid unnecessary purchases and rentals



Overall improved visibility and resource allocation that helps reduce delays and downtime, boost efficiency, and increase productivity



Data on forklift utilization, usage patterns, and productivity to identify opportunities for process improvements, optimize their workflows, and increase overall efficiency

## Asset Tracking



**CLICK HERE**  
to find out more

Manage assets remotely throughout their lifecycle and eliminate retrieval time while you reduce the number of lost, stolen, and misplaced assets.



Real-time visibility into the location and condition of assets, helping optimize asset utilization, reduce idle time, and increase productivity



Function to limit asset movement, and set up alerts and automated actions for critical assets to stay in designated areas



Real-time locating of assets for rapid minimization of search and retrieval



Performance monitoring of assets to optimize inventory

## Maintenance Tracking



**CLICK HERE**  
to find out more

Get instant notifications of equipment breakdowns. Track equipment status, calibration schedules, and repair records.



Real-time visibility into the status of assets, such as when they require maintenance, the status of repairs, and when they are available for use



Maintenance requests via the call button on the asset tag during equipment malfunction to reduce the likelihood of unscheduled downtime



Prevention of costly repairs or replacements by identifying potential issues early so that businesses can perform maintenance at the optimal time

## Process Tracking



**CLICK HERE**  
to find out more

Control every facet of the production process for efficiency, quality, and traceability. Save time and money in labor costs.



Tracking of all manufacturing steps, creation of alerts for products that fail tests, and tracing of products through rework



Prevention of production line disruption with visibility of the quantity and location of all raw materials, subassemblies, and finished products



Tracking of critical components of every single product for traceability



Identification of each product and display of specific instructions for the operator, and elimination of manual scans

## Yard Management



[CLICK HERE](#)  
to find out more

Get a full view of the yard to identify bottlenecks and improve material handling processes, safety, and security as well as turnaround times.



Monitoring all trailers, lifting equipment, and people in real-time



Identification of each trailer to automate check-in and check-out at gates and eliminate wasted man-hours

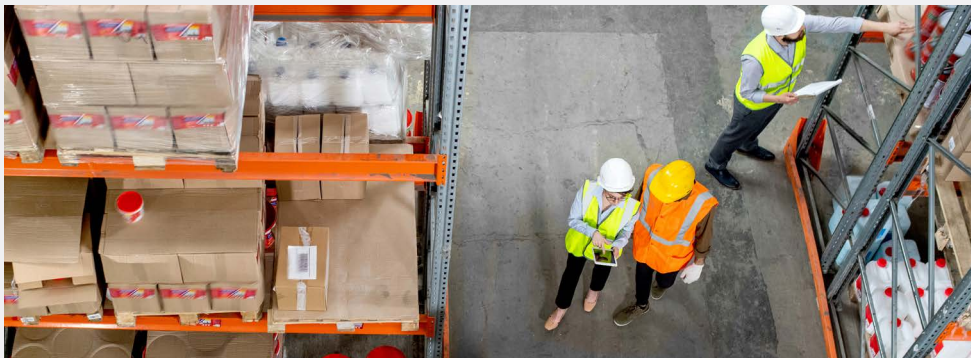


Directing trailers to available docks to eliminate queues



Integration with forklift tracking to improve loading/unloading times

## Employee Tracking



[CLICK HERE](#)  
to find out more

Improve value-added activities with long-range oversight of employee status and movement. Eliminate inefficiencies, improve workflows, and reduce operational costs.



Workflow optimization based on workforce locations



Accurate and specific time reporting by work area



Swift implementation of any business rule, from social distancing to reporting on past interactions between employees based on workplace regulations

### **Litum Solution Deployed by a Fortune 10 Oil and Gas Company in the US**

Litum reduced operational costs, increased efficiency, and ensured workplace safety at an oil and gas site in the US, despite challenges posed by the environment.



**15,000+** Forklifts



**200,000+** Employees



**1,000,000+** Assets



**210,000,000+** Square Feet Area



Litum Global Headquarters

## ABOUT LITUM

Established in 2004 by a group of visionary engineers, Litum helps businesses transform through indoor location services (RTLS) that increase workplace safety, security, and efficiency. Litum designs and manufactures its entire solution portfolio, including hardware and software, and provides system integration services. Today, through its large network of partners, Litum provides solutions across the globe in diverse environments. Litum solutions are utilized by industry leading firms such as Fortune 500 companies as well as governmental establishments and agencies in more than 50 countries around the world.



Trusted by



Litum Production Facilities